



# TRIB2 Polyclonal Antibody

<b>Catalog No</b>	BYab-06759
<b>Isotype</b>	IgG
<b>Reactivity</b>	Human;Mouse
<b>Applications</b>	WB;ELISA
<b>Gene Name</b>	TRIB2 TRB2
<b>Protein Name</b>	Tribbles homolog 2 (TRB-2)
<b>Immunogen</b>	Synthesized peptide derived from part region of human protein
<b>Specificity</b>	TRIB2 Polyclonal Antibody detects endogenous levels of protein.
<b>Formulation</b>	Liquid in PBS containing 50% glycerol, and 0.02% sodium azide.
<b>Source</b>	Polyclonal, Rabbit,IgG
<b>Purification</b>	The antibody was affinity-purified from rabbit antiserum by affinity-chromatography using epitope-specific immunogen.
<b>Dilution</b>	WB 1:500-2000 ELISA 1:5000-20000
<b>Concentration</b>	1 mg/ml
<b>Purity</b>	≥90%
<b>Storage Stability</b>	-20°C/1 year
<b>Synonyms</b>	
<b>Observed Band</b>	37kD
<b>Cell Pathway</b>	Cytoplasm . Cytoplasm, cytoskeleton . May associate with the cytoskeleton. .
<b>Tissue Specificity</b>	Highly expressed in peripheral blood leukocytes.
<b>Function</b>	function:Interacts with MAPK kinases and regulates activation of MAP kinases. Does not display kinase activity.,miscellaneous:Antibodies against TRIB2 are present in sera from patients with autoimmune uveitis.,similarity:Belongs to the protein kinase superfamily: CAMK Ser/Thr protein kinase family. Tribbles subfamily.,similarity:Contains 1 protein kinase domain.,subcellular location:May associate with the cytoskeleton.,tissue specificity:Highly expressed in peripheral blood leukocytes.,
<b>Background</b>	This gene encodes one of three members of the Tribbles family. The Tribbles members share a Trb domain, which is homologous to protein serine-threonine kinases, but lacks the active site lysine and probably lacks a catalytic function. The Tribbles proteins interact and modulate the activity of signal transduction

Nanjing BYabscience technology Co.,Ltd



pathways in a number of physiological and pathological processes. This Tribbles member induces apoptosis of cells mainly of the hematopoietic origin. It has been identified as a protein up-regulated by inflammatory stimuli in myeloid (THP-1) cells, and also as an oncogene that inactivates the transcription factor C/EBPalpha (CCAAT/enhancer-binding protein alpha) and causes acute myelogenous leukemia. Alternatively spliced transcript variants have been found for this gene. [provided by RefSeq, Mar 2009],

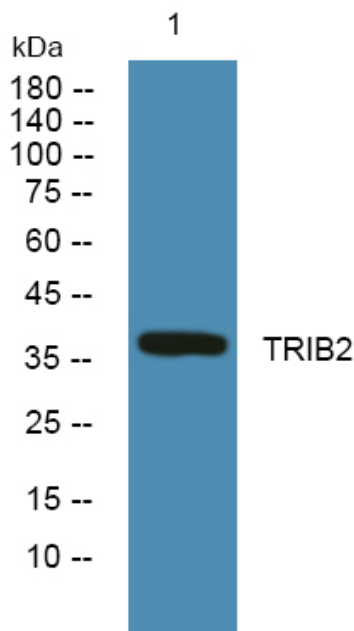
**matters needing attention**

Avoid repeated freezing and thawing!

**Usage suggestions**

This product can be used in immunological reaction related experiments. For more information, please consult technical personnel.

## Products Images



Western blot analysis of lysates from K562 cells, primary antibody was diluted at 1:1000, 4° over night