



NRBP Polyclonal Antibody

Catalog No	BYab-06757
Isotype	IgG
Reactivity	Human;Mouse
Applications	WB;ELISA
Gene Name	NRBP1 BCON3 NRBP
Protein Name	Nuclear receptor-binding protein
Immunogen	Synthesized peptide derived from part region of human protein
Specificity	NRBP Polyclonal Antibody detects endogenous levels of protein.
Formulation	Liquid in PBS containing 50% glycerol, and 0.02% sodium azide.
Source	Polyclonal, Rabbit,IgG
Purification	The antibody was affinity-purified from rabbit antiserum by affinity-chromatography using epitope-specific immunogen.
Dilution	WB 1:500-2000 ELISA 1:5000-20000
Concentration	1 mg/ml
Purity	≥90%
Storage Stability	-20°C/1 year
Synonyms	
Observed Band	58kD
Cell Pathway	Cytoplasm, cell cortex . Endomembrane system . Cell projection, lamellipodium . Colocalizes with activated RAC3 to endomembranes and at the cell periphery in lamellipodia.
Tissue Specificity	Ubiquitously expressed in all tissues examined with high levels in the testis.
Function	caution:Author states that kinase activity observed in PubMed:11956649 may be due to sample contamination. This protein is predicted to be catalytically inactive.,domain:The protein kinase domain is predicted to be catalytically inactive.,function:May play a role in subcellular trafficking between the endoplasmic reticulum and Golgi apparatus through interactions with the Rho-type GTPases. Binding to the NS3 protein of dengue virus type 2 appears to subvert this activity into the alteration of the intracellular membrane structure associated with flaviviral replication.,similarity:Belongs to the protein kinase superfamily. Ser/Thr protein kinase family.,similarity:Contains 1 protein kinase domain.,subcellular location:Colocalizes with activated RAC3 to endomembranes and at the cell periphery in lamellipodia.,subunit:Homodimer. Binds to MLF1,

Nanjing BYabscience technology Co.,Ltd



recruiting a serine kinase which phosphorylates

Background

caution: Author states that kinase activity observed in PubMed:11956649 may be due to sample contamination. This protein is predicted to be catalytically inactive., domain: The protein kinase domain is predicted to be catalytically inactive., function: May play a role in subcellular trafficking between the endoplasmic reticulum and Golgi apparatus through interactions with the Rho-type GTPases. Binding to the NS3 protein of dengue virus type 2 appears to subvert this activity into the alteration of the intracellular membrane structure associated with flaviviral replication., similarity: Belongs to the protein kinase superfamily. Ser/Thr protein kinase family., similarity: Contains 1 protein kinase domain., subcellular location: Colocalizes with activated RAC3 to endomembranes and at the cell periphery in lamellipodia., subunit: Homodimer. Binds to MLF1, recruiting a serine kinase which phosphorylates both itself and MLF1. Phosphorylated MLF1 binds to YWHAZ and is retained in the cytoplasm., tissue specificity: Ubiquitously expressed in all tissues examined with high levels in the testis.,

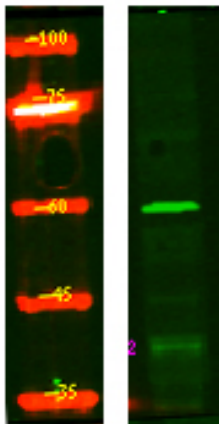
matters needing attention

Avoid repeated freezing and thawing!

Usage suggestions

This product can be used in immunological reaction related experiments. For more information, please consult technical personnel.

Products Images



Western Blot analysis of HEK293 lysis, using primary antibody at 1:1000 dilution. Secondary antibody(catalog#:RS23920) was diluted at 1:10000

Nanjing BYabscience technology Co.,Ltd