



# TSSK1 Polyclonal Antibody

|                           |   |
|---------------------------|---|
| <b>Catalog No</b>         | BYab-06755  |
| <b>Isotype</b>            | IgG   |
| <b>Reactivity</b>         | Human;Mouse   |
| <b>Applications</b>       | WB;ELISA  |
| <b>Gene Name</b>          | TSSK1B SPOGA1 SPOGA4 STK22A STK22D TSSK1 FKSG81   |
| <b>Protein Name</b>       | Testis-specific serine/threonine-protein kinase 1 (TSK-1) (TSK1) (TSSK-1) (Testis-specific kinase 1) (EC 2.7.11.1) (Serine/threonine-protein kinase 22A)  |
| <b>Immunogen</b>          | Synthesized peptide derived from part region of human protein   |
| <b>Specificity</b>        | TSSK1 Polyclonal Antibody detects endogenous levels of protein.   |
| <b>Formulation</b>        | Liquid in PBS containing 50% glycerol, and 0.02% sodium azide.  |
| <b>Source</b>             | Polyclonal, Rabbit,IgG  |
| <b>Purification</b>       | The antibody was affinity-purified from rabbit antiserum by affinity-chromatography using epitope-specific immunogen.   |
| <b>Dilution</b>           | WB 1:500-2000 ELISA 1:5000-20000  |
| <b>Concentration</b>      | 1 mg/ml   |
| <b>Purity</b>             | ≥90%  |
| <b>Storage Stability</b>  | -20°C/1 year  |
| <b>Synonyms</b>           |   |
| <b>Observed Band</b>      | 40kD  |
| <b>Cell Pathway</b>       | Cytoplasm . Cytoplasmic vesicle, secretory vesicle, acrosome . Cell projection, cilium, flagellum . In spermatozoa, present in the sperm head and in the flagellum.   |
| <b>Tissue Specificity</b> | Testis-specific. Present in sperm (at protein level).   |
| <b>Function</b>           | catalytic activity:ATP + a protein = ADP + a phosphoprotein.,cofactor:Magnesium.,enzyme regulation:Activated by phosphorylation on Thr-174, potentially by autophosphorylation.,function:May be involved in a signaling pathway during male germ cell development or mature sperm function.,PTM:Autophosphorylated.,similarity:Belongs to the protein kinase superfamily.,similarity:Belongs to the protein kinase superfamily. CAMK Ser/Thr protein kinase family.,similarity:Contains 1 protein kinase domain., |
| <b>Background</b>         | TSSK1 belongs to a family of serine/threonine kinases highly expressed in testis (Hao et al., 2004 [PubMed 15044604]).[supplied by OMIM, Mar 2008],   |

Nanjing BYabscience technology Co.,Ltd



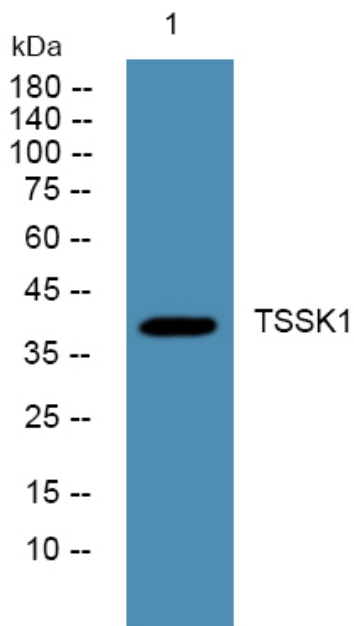
**matters needing attention**

Avoid repeated freezing and thawing!

**Usage suggestions**

This product can be used in immunological reaction related experiments. For more information, please consult technical personnel.

**Products Images**



Nanjing BYabscience technology Co.,Ltd

网址: [www.njbybio.com](http://www.njbybio.com)

官方热线: 025-5229-8998

监督电话: 15950492658