



# TRIO Polyclonal Antibody

<b>Catalog No</b>	BYab-06754
<b>Isotype</b>	IgG
<b>Reactivity</b>	Human;Mouse
<b>Applications</b>	IHC;IF
<b>Gene Name</b>	TRIO
<b>Protein Name</b>	Triple functional domain protein (EC 2.7.11.1) (PTPRF-interacting protein)
<b>Immunogen</b>	Synthesized peptide derived from part region of human protein
<b>Specificity</b>	TRIO Polyclonal Antibody detects endogenous levels of protein.
<b>Formulation</b>	Liquid in PBS containing 50% glycerol, and 0.02% sodium azide.
<b>Source</b>	Polyclonal, Rabbit,IgG
<b>Purification</b>	The antibody was affinity-purified from rabbit antiserum by affinity-chromatography using epitope-specific immunogen.
<b>Dilution</b>	IHC-p 1:50-300. IF 1:50-200
<b>Concentration</b>	1 mg/ml
<b>Purity</b>	≥90%
<b>Storage Stability</b>	-20°C/1 year
<b>Synonyms</b>	
<b>Observed Band</b>	340kD
<b>Cell Pathway</b>	Cytoplasm . Cell projection .
<b>Tissue Specificity</b>	Widely expressed, with highest levels in heart, skeletal muscle, and brain.
<b>Function</b>	catalytic activity:ATP + a protein = ADP + a phosphoprotein.,domain:The N-terminal DBL/GEF domain specifically catalyzes nucleotide exchange for RAC1, leading to the activation of Jun kinase and the production of membrane ruffles. The second DBL/GEF domain is an exchange factor for rhoa and induces the formation of stress fibers.,function:Promotes the exchange of GDP by GTP. Together with leukocyte antigen-related (LAR) protein, it could play a role in coordinating cell-matrix and cytoskeletal rearrangements necessary for cell migration and cell growth.,PTM:Phosphorylated on serine residue(s).,similarity:Belongs to the protein kinase superfamily. CAMK Ser/Thr protein kinase family.,similarity:Contains 1 CRAL-TRIO domain.,similarity:Contains 1 Ig-like C2-type (immunoglobulin-like) domain.,similarity:Contains 1 protein kinase domain.,similarity:Contains 2 DH

Nanjing BYabscience technology Co.,Ltd



(DBL-homology) domains.,similar

**Background**

This gene encodes a large protein that functions as a GDP to GTP exchange factor. This protein promotes the reorganization of the actin cytoskeleton, thereby playing a role in cell migration and growth. Alternative splicing results in multiple transcript variants. [provided by RefSeq, Dec 2015],

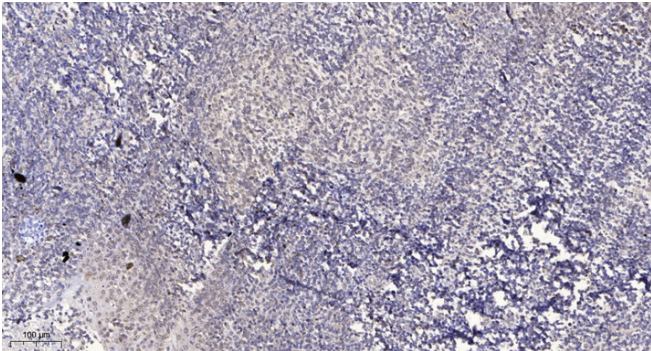
**matters needing attention**

Avoid repeated freezing and thawing!

**Usage suggestions**

This product can be used in immunological reaction related experiments. For more information, please consult technical personnel.

**Products Images**



Immunohistochemical analysis of paraffin-embedded human tonsil. 1, Antibody was diluted at 1:200(4° overnight). 2, Tris-EDTA,pH9.0 was used for antigen retrieval. 3,Secondary antibody was diluted at 1:200(room temperature, 30min).