



TAOK2 Polyclonal Antibody

Catalog No	BYab-06752
Isotype	IgG
Reactivity	Human;Mouse;Rat
Applications	WB;ELISA
Gene Name	TAOK2 KIAA0881 MAP3K17 PSK PSK1 UNQ2971/PRO7431
Protein Name	Serine/threonine-protein kinase TAO2 (EC 2.7.11.1) (Kinase from chicken homolog C) (hKFC-C) (Prostate-derived sterile 20-like kinase 1) (PSK-1) (PSK1) (Prostate-derived STE20-like kinase 1) (Thousand
Immunogen	Synthesized peptide derived from part region of human protein
Specificity	TAOK2 Polyclonal Antibody detects endogenous levels of protein.
Formulation	Liquid in PBS containing 50% glycerol, and 0.02% sodium azide.
Source	Polyclonal, Rabbit,IgG
Purification	The antibody was affinity-purified from rabbit antiserum by affinity-chromatography using epitope-specific immunogen.
Dilution	WB 1:500-2000 ELISA 1:5000-20000
Concentration	1 mg/ml
Purity	≥90%
Storage Stability	-20°C/1 year
Synonyms	
Observed Band	135kD
Cell Pathway	Cytoplasmic vesicle membrane ; Multi-pass membrane protein . Cytoplasm, cytoskeleton. Nucleus. Catalytically active full-length phosphorylated isoform 1 localizes to microtubules in the cytoplasm predominantly on microtubule cables positioned around the nucleus. A C-terminally truncated form of isoform 1 is present in the nucleus; isoform 2 and kinase-defective, as well as full-length isoform 1 are excluded from the nucleus.; [Isoform 2]: Cell projection, dendrite. In dendrites, colocalizes with PCDH8. .
Tissue Specificity	Ubiquitously expressed, with a higher level of expression in testis and brain.
Function	catalytic activity:ATP + a protein = ADP + a phosphoprotein.,cofactor:Magnesium.,function:Activates the JNK MAP kinase pathway through the specific activation of the upstream MKK3 and MKK6 kinases.,similarity:Belongs to the protein kinase superfamily.,similarity:Belongs to the protein kinase superfamily. STE Ser/Thr protein kinase family. STE20

Nanjing BYabscience technology Co.,Ltd



subfamily.,similarity:Contains 1 protein kinase domain.,subcellular location:Found to be perinuclear and localized to vesicular compartment.,subunit:Interacts with MKK3 and MKK6 (By similarity). Self-associates.,tissue specificity:Ubiquitously expressed, with a higher level of expression in testis and brain.,

Background

This gene encodes a serine/threonine protein kinase that is involved in many different processes, including, cell signaling, microtubule organization and stability, and apoptosis. Alternatively spliced transcript variants encoding different isoforms have been described for this gene. [provided by RefSeq, Oct 2011],

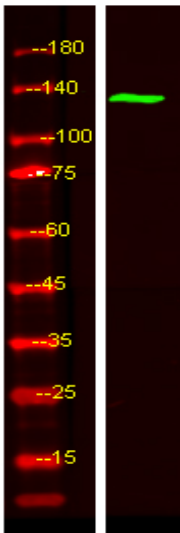
matters needing attention

Avoid repeated freezing and thawing!

Usage suggestions

This product can be used in immunological reaction related experiments. For more information, please consult technical personnel.

Products Images



Western Blot analysis of HEK293 lysis, using primary antibody at 1:1000 dilution. Secondary antibody(catalog#:RS23920) was diluted at 1:10000