



NFE2 Polyclonal Antibody

Catalog No	BYab-06688
Isotype	IgG
Reactivity	Human;Mouse;Rat
Applications	WB;ELISA
Gene Name	NFE2
Protein Name	Transcription factor NF-E2 45 kDa subunit (Leucine zipper protein NF-E2) (Nuclear factor, erythroid-derived 2 45 kDa subunit) (p45 NF-E2)
Immunogen	Synthesized peptide derived from part region of human protein
Specificity	NFE2 Polyclonal Antibody detects endogenous levels of protein.
Formulation	Liquid in PBS containing 50% glycerol, and 0.02% sodium azide.
Source	Polyclonal, Rabbit,IgG
Purification	The antibody was affinity-purified from rabbit antiserum by affinity-chromatography using epitope-specific immunogen.
Dilution	WB 1:500-2000 ELISA 1:5000-20000
Concentration	1 mg/ml
Purity	≥90%
Storage Stability	-20°C/1 year
Synonyms	
Observed Band	41kD
Cell Pathway	Nucleus, PML body. Cytoplasm. The sumoylated form locates to the nuclear bodies PML oncogenic domains (PODs). Translocated to the cytoplasm through interaction with ITCH.
Tissue Specificity	Expressed in hematopoietic cells and also in colon and testis.
Function	function:Required for activity at the locus control region (LCR) upstream of the globin gene complexes. Requires p18 NF-E2 for binding to the NF-E2 motif. May play a role in all aspects of hemoglobin production: globin synthesis, heme synthesis, and the procurement of iron.,similarity:Belongs to the bZIP family.,similarity:Belongs to the bZIP family. CNC subfamily.,similarity:Contains 1 bZIP domain.,subunit:Interacts with MLL2; leading to activate transcription of the beta-globin locus (By similarity). Heterodimer of p45 NF-E2 and p18 NF-E2. Forms high affinity heterodimer with MAFG; the interaction promotes erythropoiesis.,tissue specificity:Expressed in hematopoietic cells and also in colon and testis.,

Nanjing BYabscience technology Co.,Ltd



Background

function:Required for activity at the locus control region (LCR) upstream of the globin gene complexes. Requires p18 NF-E2 for binding to the NF-E2 motif. May play a role in all aspects of hemoglobin production: globin synthesis, heme synthesis, and the procurement of iron.,similarity:Belongs to the bZIP family.,similarity:Belongs to the bZIP family. CNC subfamily.,similarity:Contains 1 bZIP domain.,subunit:Interacts with MLL2; leading to activate transcription of the beta-globin locus (By similarity). Heterodimer of p45 NF-E2 and p18 NF-E2. Forms high affinity heterodimer with MAFG; the interaction promotes erythropoiesis.,tissue specificity:Expressed in hematopoietic cells and also in colon and testis.,

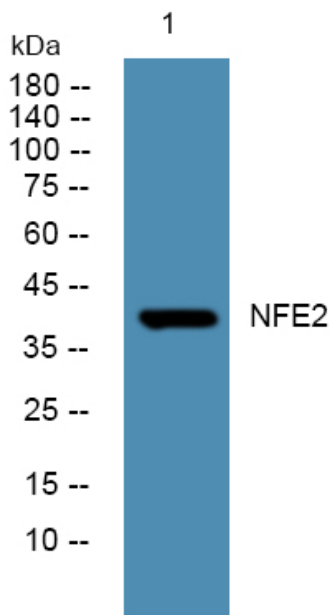
matters needing attention

Avoid repeated freezing and thawing!

Usage suggestions

This product can be used in immunological reaction related experiments. For more information, please consult technical personnel.

Products Images



Western blot analysis of lysates from U2OS cells, primary antibody was diluted at 1:1000, 4° over night