



KLF17 Polyclonal Antibody

Catalog No	BYab-06687
Isotype	IgG
Reactivity	Human;Rat;Mouse;
Applications	WB;ELISA
Gene Name	KLF17 ZNF393
Protein Name	Krueppel-like factor 17 (Zinc finger protein 393)
Immunogen	Synthesized peptide derived from part region of human protein
Specificity	KLF17 Polyclonal Antibody detects endogenous levels of protein.
Formulation	Liquid in PBS containing 50% glycerol, and 0.02% sodium azide.
Source	Polyclonal, Rabbit,IgG
Purification	The antibody was affinity-purified from rabbit antiserum by affinity-chromatography using epitope-specific immunogen.
Dilution	WB 1:500-2000 ELISA 1:5000-20000
Concentration	1 mg/ml
Purity	≥90%
Storage Stability	-20°C/1 year
Synonyms	
Observed Band	42kD
Cell Pathway	Nucleus .
Tissue Specificity	Brain,Testis,
Function	function: Binds G/C-rich sites via its zinc fingers and activates transcription from CACCC-box elements. May be a germ cell-specific transcription factor that plays important roles in spermatid differentiation and oocyte development.;similarity: Belongs to the Sp1 C2H2-type zinc-finger protein family.;similarity: Contains 3 C2H2-type zinc fingers.;
Background	function: Binds G/C-rich sites via its zinc fingers and activates transcription from CACCC-box elements. May be a germ cell-specific transcription factor that plays important roles in spermatid differentiation and oocyte development.;similarity: Belongs to the Sp1 C2H2-type zinc-finger protein family.;similarity: Contains 3 C2H2-type zinc fingers.;

Nanjing BYabscience technology Co.,Ltd



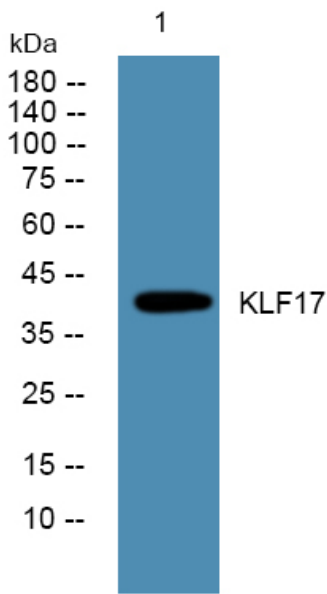
matters needing attention

Avoid repeated freezing and thawing!

Usage suggestions

This product can be used in immunological reaction related experiments. For more information, please consult technical personnel.

Products Images



Western blot analysis of lysates from Jarkat cells, primary antibody was diluted at 1:1000, 4° over night