



CR3L3 Polyclonal Antibody

Catalog No	BYab-06676
Isotype	IgG
Reactivity	Human;Mouse;Rat
Applications	WB;ELISA
Gene Name	CREB3L3 CREBH HYST1481
Protein Name	Cyclic AMP-responsive element-binding protein 3-like protein 3 (cAMP-responsive element-binding protein 3-like protein 3) (Transcription factor CREB-H) [Cleaved into: Processed cyclic AMP-responsive e
Immunogen	Synthesized peptide derived from part region of human protein AA range: 1-100
Specificity	CR3L3 Polyclonal Antibody detects endogenous levels of protein.
Formulation	Liquid in PBS containing 50% glycerol, and 0.02% sodium azide.
Source	Polyclonal, Rabbit,IgG
Purification	The antibody was affinity-purified from rabbit antiserum by affinity-chromatography using epitope-specific immunogen.
Dilution	WB 1:500-2000 ELISA 1:5000-20000
Concentration	1 mg/ml
Purity	≥90%
Storage Stability	-20°C/1 year
Synonyms	
Observed Band	50kD
Cell Pathway	Endoplasmic reticulum membrane ; Single-pass type II membrane protein . ; [Processed cyclic AMP-responsive element-binding protein 3-like protein 3]: Nucleus . Under ER stress the cleaved N-terminal cytoplasmic domain translocates into the nucleus.
Tissue Specificity	Exclusively expressed in liver. Underexpressed in hepatocellular carcinoma tissues.
Function	function:Transcription factor that may act during endoplasmic reticulum stress by activating unfolded protein response target genes. Activated in response to cAMP stimulation. In vitro, binds to the cAMP response element (CRE) and box-B element. Activates transcription through box-B element. Activates transcription through CRE (By similarity). Seems to function synergistically with ATF6. In acute inflammatory response, may activate expression of acute phase response (APR) genes. May be involved in growth suppression.,PTM:Controlled by regulated intramembrane proteolysis (RIP). Following ER stress a fragment containing the

Nanjing BYabscience technology Co.,Ltd



cytoplasmic transcription factor domain is released by proteolysis. The cleavage seems to be performed sequentially by site-1 and site-2 proteases (PS1 and PS2).,similarity:Belongs to the bZIP family.,similarity:Belongs to the bZIP family. ATF subfamily.,similarity:Cont

Background

This gene encodes a member of the basic-leucine zipper family and the AMP-dependent transcription factor family. The encoded protein is localized to the endoplasmic reticulum and acts as a transcription factor activated by cyclic AMP stimulation. The encoded protein binds the cyclic AMP response element (CRE) and the box-B element and has been linked to acute inflammatory response, hepatocellular carcinoma, triglyceride metabolism, and hepcidin expression. Alternative splicing results in multiple transcript variants. [provided by RefSeq, Dec 2012],

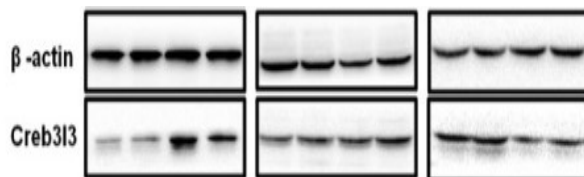
matters needing attention

Avoid repeated freezing and thawing!

Usage suggestions

This product can be used in immunological reaction related experiments. For more information, please consult technical personnel.

Products Images



Liu, Xiaomei, et al. "Maternal protein restriction induces alterations in hepatic unfolded protein response-related molecules in adult rat offspring." *Frontiers in endocrinology* 9 (2018).