



# MARE2 Polyclonal Antibody

<b>Catalog No</b>	BYab-06672
<b>Isotype</b>	IgG
<b>Reactivity</b>	Human;Mouse;Rat
<b>Applications</b>	WB;ELISA
<b>Gene Name</b>	MAPRE2 RP1
<b>Protein Name</b>	Microtubule-associated protein RP/EB family member 2 (APC-binding protein EB2) (End-binding protein 2) (EB2)
<b>Immunogen</b>	Synthesized peptide derived from part region of human protein
<b>Specificity</b>	MARE2 Polyclonal Antibody detects endogenous levels of protein.
<b>Formulation</b>	Liquid in PBS containing 50% glycerol, and 0.02% sodium azide.
<b>Source</b>	Polyclonal, Rabbit,IgG
<b>Purification</b>	The antibody was affinity-purified from rabbit antiserum by affinity-chromatography using epitope-specific immunogen.
<b>Dilution</b>	WB 1:500-2000 ELISA 1:5000-20000
<b>Concentration</b>	1 mg/ml
<b>Purity</b>	≥90%
<b>Storage Stability</b>	-20°C/1 year
<b>Synonyms</b>	
<b>Observed Band</b>	35kD
<b>Cell Pathway</b>	Cytoplasm, cytoskeleton . Associated with the microtubule network. Accumulates at the plus end of microtubules.
<b>Tissue Specificity</b>	Expressed in different tumor cell lines. Up-regulated in activated B- and T-lymphocytes.
<b>Function</b>	domain:Composed of two functionally independent domains. The N-terminal domain forms an hydrophobic cleft involved in microtubule binding and the C-terminal is involved in the formation of mutually exclusive complexes with APC and DCTN1.,function:May be involved in microtubule polymerization, and spindle function by stabilizing microtubules and anchoring them at centrosomes. May play a role in cell migration.,similarity:Belongs to the MAPRE family.,similarity:Contains 1 CH (calponin-homology) domain.,similarity:Contains 1 EB1 C-terminal domain.,subcellular location:Associated with the microtubule network. Accumulates at the plus end of microtubules.,subunit:Interacts with DCTN1. Binds to the C-terminal domain of APC. Binds monomeric and polymerized tubulin.,tissue specificity:Expressed in different tumor cell lines. Up-regulated in

Nanjing BYabscience technology Co.,Ltd



activated B- and T-lymphocytes.,

### Background

The protein encoded by this gene shares significant homology to the adenomatous polyposis coli (APC) protein-binding EB1 gene family. This protein is a microtubule-associated protein that is necessary for spindle symmetry during mitosis. It is thought to play a role in the tumorigenesis of colorectal cancers and the proliferative control of normal cells. Alternative splicing of this gene results in multiple transcript variants. [provided by RefSeq, Jan 2012],

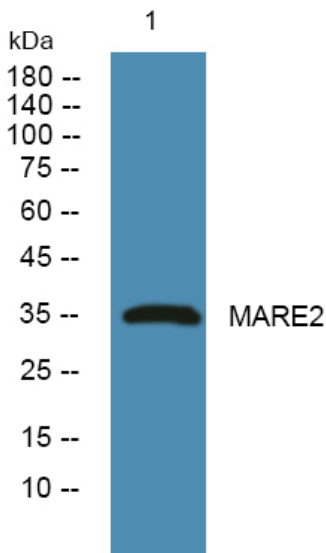
### matters needing attention

Avoid repeated freezing and thawing!

### Usage suggestions

This product can be used in immunological reaction related experiments. For more information, please consult technical personnel.

## Products Images



Western blot analysis of lysates from K562 cells, primary antibody was diluted at 1:1000, 4° over night