



NSA2 Polyclonal Antibody

Catalog No	BYab-06661
Isotype	IgG
Reactivity	Human;Mouse;Rat
Applications	WB;ELISA
Gene Name	NSA2 TINP1 HUSSY-29
Protein Name	Ribosome biogenesis protein NSA2 homolog (Hairy cell leukemia protein 1) (TGF-beta-inducible nuclear protein 1)
Immunogen	Synthesized peptide derived from part region of human protein
Specificity	NSA2 Polyclonal Antibody detects endogenous levels of protein.
Formulation	Liquid in PBS containing 50% glycerol, and 0.02% sodium azide.
Source	Polyclonal, Rabbit,IgG
Purification	The antibody was affinity-purified from rabbit antiserum by affinity-chromatography using epitope-specific immunogen.
Dilution	WB 1:500-2000 ELISA 1:5000-20000
Concentration	1 mg/ml
Purity	≥90%
Storage Stability	-20°C/1 year
Synonyms	
Observed Band	28kD
Cell Pathway	Nucleus, nucleolus .
Tissue Specificity	Kidney,Skeletal muscle,Trachea,Urinary bladder,
Function	function:Involved in the biogenesis of the 60S ribosomal subunit. May play a part in the quality control of pre-60S particles.,similarity:Belongs to the ribosomal protein S8e family.,subunit:Component of the pre-66S ribosomal particle.,
Background	NSA2, ribosome biogenesis homolog(NSA2) Homo sapiens This gene encodes a nucleolar protein involved in cell cycle regulation and proliferation. This gene was identified based on sequence similarity to a highly conserved Saccharomyces cerevisiae gene encoding a pre-ribosomal protein, which is involved in large ribosomal subunit biogenesis. The encoded protein is found at elevated levels in diabetic nephropathy. Alternative splicing results in multiple transcript variants. Several related pseudogenes have been identified. [provided by RefSeq, Nov 2012],

Nanjing BYabscience technology Co.,Ltd



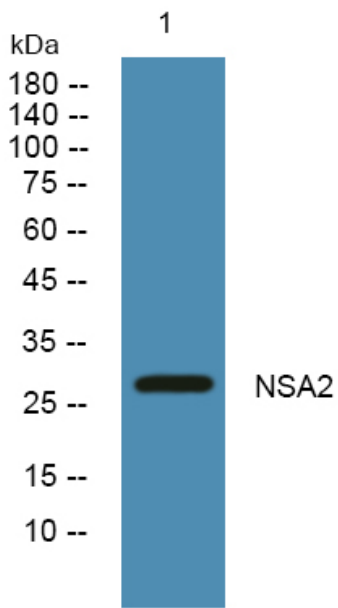
matters needing attention

Avoid repeated freezing and thawing!

Usage suggestions

This product can be used in immunological reaction related experiments. For more information, please consult technical personnel.

Products Images



Western blot analysis of lysates from DU145 cells, primary antibody was diluted at 1:1000, 4° over night