



JAML1 Polyclonal Antibody

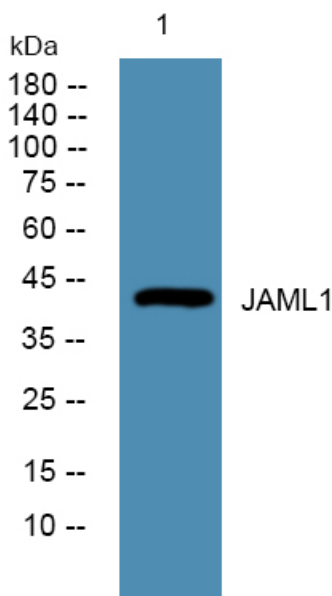
Catalog No	BYab-06642
Isotype	IgG
Reactivity	Human;Rat;Mouse;
Applications	WB;ELISA
Gene Name	AMICA1 JAML UNQ722/PRO1387
Protein Name	Junctional adhesion molecule-like (Adhesion molecule interacting with CXADR antigen 1) (Dendritic cell-specific protein CREA7-1)
Immunogen	Synthesized peptide derived from part region of human protein
Specificity	JAML1 Polyclonal Antibody detects endogenous levels of protein.
Formulation	Liquid in PBS containing 50% glycerol, and 0.02% sodium azide.
Source	Polyclonal, Rabbit,IgG
Purification	The antibody was affinity-purified from rabbit antiserum by affinity-chromatography using epitope-specific immunogen.
Dilution	WB 1:500-2000 ELISA 1:5000-20000
Concentration	1 mg/ml
Purity	≥90%
Storage Stability	-20°C/1 year
Synonyms	
Observed Band	43kD
Cell Pathway	Cell membrane ; Single-pass type I membrane protein . Cell junction . Localized at the plasma membrane and enriched in areas of cell-cell contacts (PubMed:12869515).
Tissue Specificity	Expression is restricted to the hematopoietic tissues with the exception of liver. Expressed in fetal liver, spleen and thymus. Preferentially expressed by mature leukocytes (at protein level).
Function	domain:The Ig-like V-type domain 2 mediates interaction with CXADR.,function:May function in transmigration of leukocytes through epithelial and endothelial tissues. Expressed at the plasma membrane of polymorphonuclear leukocytes, it mediates adhesive interactions with CXADR, a protein of the junctional complex of epithelial cells. Enhances myeloid leukemia cell adhesion to endothelial cells.,induction:Up-regulated upon retinoic acid, Me2SO and PMA treatment in differentiating myeloid leukemia cells.,similarity:Belongs to the immunoglobulin superfamily.,similarity:Contains 2 Ig-like V-type (immunoglobulin-like) domains.,subcellular location:Localized at the

Nanjing BYabscience technology Co.,Ltd



	plasma membrane in areas of cell-cell contacts and at the cell surface of PMN.,subunit:Interacts with CXADR.,tissue specificity:Expression is restricted to the hematopoietic tissues with the exception of liver. Expressed in fetal liv
Background	domain:The Ig-like V-type domain 2 mediates interaction with CXADR.,function:May function in transmigration of leukocytes through epithelial and endothelial tissues. Expressed at the plasma membrane of polymorphonuclear leukocytes, it mediates adhesive interactions with CXADR, a protein of the junctional complex of epithelial cells. Enhances myeloid leukemia cell adhesion to endothelial cells.,induction:Up-regulated upon retinoic acid, Me2SO and PMA treatment in differentiating myeloid leukemia cells.,similarity:Belongs to the immunoglobulin superfamily.,similarity:Contains 2 Ig-like V-type (immunoglobulin-like) domains.,subcellular location:Localized at the plasma membrane in areas of cell-cell contacts and at the cell surface of PMN.,subunit:Interacts with CXADR.,tissue specificity:Expression is restricted to the hematopoietic tissues with the exception of liver. Expressed in fetal liver, spleen and thymus.,
matters needing attention	Avoid repeated freezing and thawing!
Usage suggestions	This product can be used in immunological reaction related experiments. For more information, please consult technical personnel.

Products Images



Western blot analysis of lysates from U2OS cells, primary antibody was diluted at 1:1000, 4° over night

Nanjing BYabscience technology Co.,Ltd