



IN35 Polyclonal Antibody

Catalog No	BYab-06633
Isotype	IgG
Reactivity	Human;Rat;Mouse;
Applications	WB;ELISA
Gene Name	IFI35 IFP35
Protein Name	Interferon-induced 35 kDa protein (IFP 35) (Ifi-35)
Immunogen	Synthesized peptide derived from part region of human protein
Specificity	IN35 Polyclonal Antibody detects endogenous levels of protein.
Formulation	Liquid in PBS containing 50% glycerol, and 0.02% sodium azide.
Source	Polyclonal, Rabbit,IgG
Purification	The antibody was affinity-purified from rabbit antiserum by affinity-chromatography using epitope-specific immunogen.
Dilution	WB 1:500-2000 ELISA 1:5000-20000
Concentration	1 mg/ml
Purity	≥90%
Storage Stability	-20°C/1 year
Synonyms	
Observed Band	31kD
Cell Pathway	Cytoplasm . Nucleus . Secreted . Cytoplasmic IFI35 localizes in punctate granular structures (PubMed:10950963). Nuclear localization increased is stimulated by IFN-alpha (PubMed:8288566, PubMed:10950963). Extracelullar following secretion by macrophage (PubMed:29038465). .
Tissue Specificity	Expressed in a wide range of cell types, including fibroblasts, macrophages, and epithelial cells.
Function	function:Not yet known.,induction:By interferon gamma.,similarity:Belongs to the NMI family.,subcellular location:Nuclear following IFN treatment.,subunit:Homodimer. Also interacts with B-ATF.,tissue specificity:In a wide range of cell types, including fibroblasts, macrophages, and epithelial cells.,
Background	function:Not yet known.,induction:By interferon gamma.,similarity:Belongs to the NMI family.,subcellular location:Nuclear following IFN treatment.,subunit:Homodimer. Also interacts with B-ATF.,tissue specificity:In a wide range of cell types, including fibroblasts, macrophages, and epithelial cells.,

Nanjing BYabscience technology Co.,Ltd



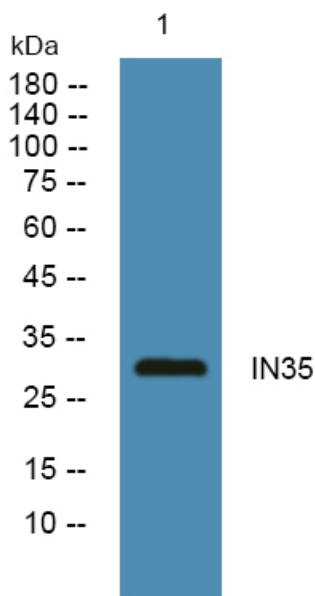
matters needing attention

Avoid repeated freezing and thawing!

Usage suggestions

This product can be used in immunological reaction related experiments. For more information, please consult technical personnel.

Products Images



Western blot analysis of lysates from KB cells, primary antibody was diluted at 1:1000, 4° over night