



IFNA2 Polyclonal Antibody

Catalog No	BYab-06626
Isotype	IgG
Reactivity	Human;Rat;Mouse;
Applications	WB;ELISA
Gene Name	IFNA2
Protein Name	Interferon alpha-2 (IFN-alpha-2) (Interferon alpha-A) (LeIF A)
Immunogen	Synthesized peptide derived from part region of human protein
Specificity	IFNA2 Polyclonal Antibody detects endogenous levels of protein.
Formulation	Liquid in PBS containing 50% glycerol, and 0.02% sodium azide.
Source	Polyclonal, Rabbit,IgG
Purification	The antibody was affinity-purified from rabbit antiserum by affinity-chromatography using epitope-specific immunogen.
Dilution	WB 1:500-2000 ELISA 1:5000-20000
Concentration	1 mg/ml
Purity	≥90%
Storage Stability	-20°C/1 year
Synonyms	
Observed Band	20kD
Cell Pathway	Secreted .
Tissue Specificity	Bone marrow tumor,PCR rescued clones,Placenta,Pooled tissue,
Function	function:Produced by macrophages, IFN-alpha have antiviral activities. Interferon stimulates the production of two enzymes: a protein kinase and an oligoadenylate synthetase.,pharmaceutical:Available under the names Roferon-A (Roche) or Intron-A (Schering-Plough). Used as an anticancer drug for its antiproliferative activity.,polymorphism:Three forms exist; alpha-2a (shown here), alpha-2b and alpha-2c.,similarity:Belongs to the alpha/beta interferon family.,
Background	This gene is a member of the alpha interferon gene cluster on chromosome 9. The encoded protein is a cytokine produced in response to viral infection. Use of the recombinant form of this protein has been shown to be effective in reducing the symptoms and duration of the common cold. [provided by RefSeq, Jun 2011],

Nanjing BYabscience technology Co.,Ltd



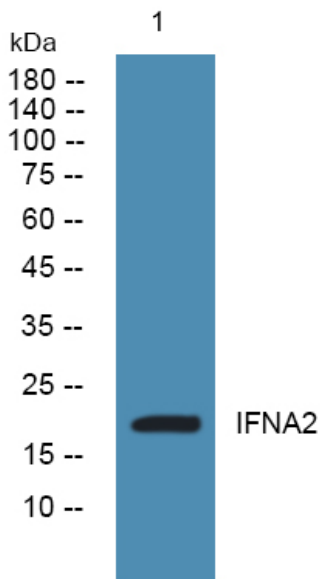
matters needing attention

Avoid repeated freezing and thawing!

Usage suggestions

This product can be used in immunological reaction related experiments. For more information, please consult technical personnel.

Products Images



Western blot analysis of lysates from SW480 cells, primary antibody was diluted at 1:1000, 4° over night