



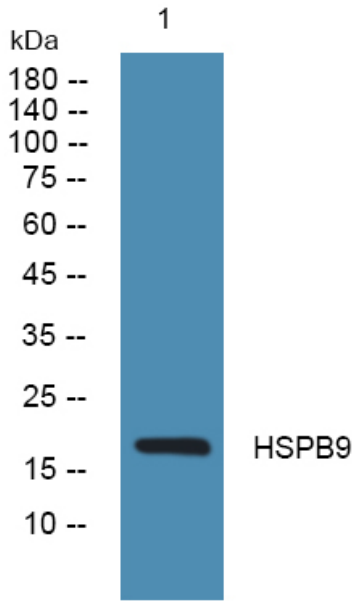
HSPB9 Polyclonal Antibody

Catalog No	BYab-06620
Isotype	IgG
Reactivity	Human;Rat;Mouse;
Applications	WB;ELISA
Gene Name	HSPB9
Protein Name	Heat shock protein beta-9 (HspB9) (Cancer/testis antigen 51) (CT51)
Immunogen	Synthesized peptide derived from human protein . at AA range: 40-120
Specificity	HSPB9 Polyclonal Antibody detects endogenous levels of protein.
Formulation	Liquid in PBS containing 50% glycerol, and 0.02% sodium azide.
Source	Polyclonal, Rabbit,IgG
Purification	The antibody was affinity-purified from rabbit antiserum by affinity-chromatography using epitope-specific immunogen.
Dilution	WB 1:500-2000 ELISA 1:5000-20000
Concentration	1 mg/ml
Purity	≥90%
Storage Stability	-20°C/1 year
Synonyms	
Observed Band	17kD
Cell Pathway	Cytoplasm . Nucleus . Translocates to nuclear foci during heat shock.
Tissue Specificity	Testis specific.
Function	similarity:Belongs to the small heat shock protein (HSP20) family.,tissue specificity:Testis specific.,
Background	similarity:Belongs to the small heat shock protein (HSP20) family.,tissue specificity:Testis specific.,
matters needing attention	Avoid repeated freezing and thawing!
Usage suggestions	This product can be used in immunological reaction related experiments. For more information, please consult technical personnel.

Nanjing BYabscience technology Co.,Ltd



Products Images



Western blot analysis of lysates from SW480 cells,
primary antibody was diluted at 1:1000, 4° over night