



# HSPB7 Polyclonal Antibody

<b>Catalog No</b>	BYab-06619
<b>Isotype</b>	IgG
<b>Reactivity</b>	Human;Mouse
<b>Applications</b>	WB;ELISA
<b>Gene Name</b>	HSPB7 CVHSP
<b>Protein Name</b>	Heat shock protein beta-7 (HspB7) (Cardiovascular heat shock protein) (cvHsp)
<b>Immunogen</b>	Synthesized peptide derived from human protein . at AA range: 100-180
<b>Specificity</b>	HSPB7 Polyclonal Antibody detects endogenous levels of protein.
<b>Formulation</b>	Liquid in PBS containing 50% glycerol, and 0.02% sodium azide.
<b>Source</b>	Polyclonal, Rabbit,IgG
<b>Purification</b>	The antibody was affinity-purified from rabbit antiserum by affinity-chromatography using epitope-specific immunogen.
<b>Dilution</b>	WB 1:500-2000 ELISA 1:5000-20000
<b>Concentration</b>	1 mg/ml
<b>Purity</b>	≥90%
<b>Storage Stability</b>	-20°C/1 year
<b>Synonyms</b>	
<b>Observed Band</b>	18kD
<b>Cell Pathway</b>	Cytoplasm . Nucleus . Nucleus, Cajal body . Resides in sub-nuclear structures known as SC35 speckles or nuclear splicing speckles.
<b>Tissue Specificity</b>	Isoform 1 is highly expressed in adult and fetal heart, skeletal muscle, and at a much lower levels in adipose tissue and in aorta. Undetectable in other tissues. Isoform 2 and isoform 3 are poorly detected in heart.
<b>Function</b>	similarity:Belongs to the small heat shock protein (HSP20) family.,subunit:Interacts with C-terminal domain of actin-binding protein 280.,tissue specificity:Isoform 1 is highly expressed in adult and fetal heart, skeletal muscle, and at a much lower levels in adipose tissue and in aorta. Undetectable in other tissues. Isoform 2 and isoform 3 are poorly detected in heart.,
<b>Background</b>	similarity:Belongs to the small heat shock protein (HSP20) family.,subunit:Interacts with C-terminal domain of actin-binding protein 280.,tissue specificity:Isoform 1 is highly expressed in adult and fetal heart, skeletal muscle, and at a much lower levels in adipose tissue and in aorta.

Nanjing BYabscience technology Co.,Ltd



Undetectable in other tissues. Isoform 2 and isoform 3 are poorly detected in heart.,

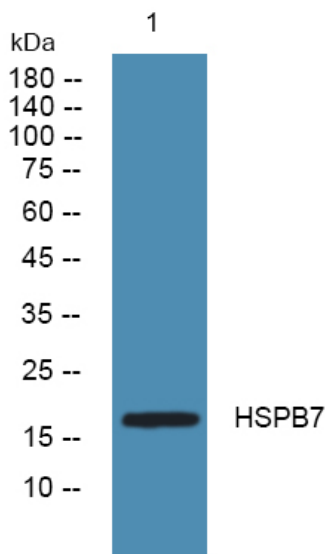
**matters needing attention**

Avoid repeated freezing and thawing!

**Usage suggestions**

This product can be used in immunological reaction related experiments. For more information, please consult technical personnel.

## Products Images



Western blot analysis of lysates from DU145 cells, primary antibody was diluted at 1:1000, 4° over night