



# HSPB3 Polyclonal Antibody

<b>Catalog No</b>	BYab-06618
<b>Isotype</b>	IgG
<b>Reactivity</b>	Human;Rat;Mouse;
<b>Applications</b>	WB;ELISA
<b>Gene Name</b>	HSPB3 HSP27 HSPL27
<b>Protein Name</b>	Heat shock protein beta-3 (HspB3) (Heat shock 17 kDa protein) (HSP 17) (Protein 3)
<b>Immunogen</b>	Synthesized peptide derived from human protein . at AA range: 30-110
<b>Specificity</b>	HSPB3 Polyclonal Antibody detects endogenous levels of protein.
<b>Formulation</b>	Liquid in PBS containing 50% glycerol, and 0.02% sodium azide.
<b>Source</b>	Polyclonal, Rabbit,IgG
<b>Purification</b>	The antibody was affinity-purified from rabbit antiserum by affinity-chromatography using epitope-specific immunogen.
<b>Dilution</b>	WB 1:500-2000 ELISA 1:5000-20000
<b>Concentration</b>	1 mg/ml
<b>Purity</b>	≥90%
<b>Storage Stability</b>	-20°C/1 year
<b>Synonyms</b>	
<b>Observed Band</b>	16kD
<b>Cell Pathway</b>	Cytoplasm . Nucleus . Translocates to nuclear foci during heat shock.
<b>Tissue Specificity</b>	Heart,Pooled,Uterus,
<b>Function</b>	function:Inhibitor of actin polymerization.,similarity:Belongs to the small heat shock protein (HSP20) family.,
<b>Background</b>	This gene encodes a muscle-specific small heat shock protein. A mutation in this gene is the cause of autosomal dominant distal hereditary motor neuropathy type 2C.[provided by RefSeq, Sep 2010],
<b>matters needing attention</b>	Avoid repeated freezing and thawing!

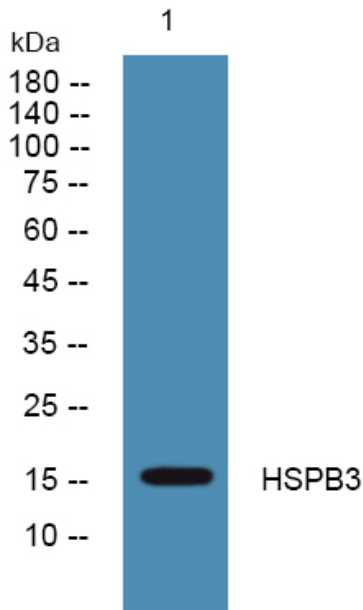
Nanjing BYabscience technology Co.,Ltd



**Usage suggestions**

This product can be used in immunological reaction related experiments. For more information, please consult technical personnel.

**Products Images**



Western blot analysis of lysates from PC12 cells, primary antibody was diluted at 1:1000, 4° over night