



# CYB5B Polyclonal Antibody

|                           |  |
|---------------------------|--|
| <b>Catalog No</b>         | BYab-06601   |
| <b>Isotype</b>            | IgG  |
| <b>Reactivity</b>         | Human;Rat;Mouse;   |
| <b>Applications</b>       | WB;ELISA   |
| <b>Gene Name</b>          | CYB5B CYB5M OMB5   |
| <b>Protein Name</b>       | Cytochrome b5 type B (Cytochrome b5 outer mitochondrial membrane isoform)  |
| <b>Immunogen</b>          | Synthesized peptide derived from human protein . at AA range: 50-130   |
| <b>Specificity</b>        | CYB5B Polyclonal Antibody detects endogenous levels of protein.  |
| <b>Formulation</b>        | Liquid in PBS containing 50% glycerol, and 0.02% sodium azide.   |
| <b>Source</b>             | Polyclonal, Rabbit,IgG   |
| <b>Purification</b>       | The antibody was affinity-purified from rabbit antiserum by affinity-chromatography using epitope-specific immunogen.  |
| <b>Dilution</b>           | WB 1:500-2000 ELISA 1:5000-20000   |
| <b>Concentration</b>      | 1 mg/ml  |
| <b>Purity</b>             | ≥90%   |
| <b>Storage Stability</b>  | -20°C/1 year   |
| <b>Synonyms</b>           |  |
| <b>Observed Band</b>      | 16kD   |
| <b>Cell Pathway</b>       | Mitochondrion outer membrane .   |
| <b>Tissue Specificity</b> | Cervix,Lymph,Pancreas,Placenta,Testis,   |
| <b>Function</b>           | function:Cytochrome b5 is a membrane bound hemoprotein which function as an electron carrier for several membrane bound oxygenases.,similarity:Belongs to the cytochrome b5 family.,similarity:Contains 1 cytochrome b5 heme-binding domain.,subunit:Component of a complex composed of cytochrome b5, NADH-cytochrome b5 reductase (CYB5R3) and MOSC2., |
| <b>Background</b>         | function:Cytochrome b5 is a membrane bound hemoprotein which function as an electron carrier for several membrane bound oxygenases.,similarity:Belongs to the cytochrome b5 family.,similarity:Contains 1 cytochrome b5 heme-binding domain.,subunit:Component of a complex composed of cytochrome b5, NADH-cytochrome b5 reductase (CYB5R3) and MOSC2., |

Nanjing BYabscience technology Co.,Ltd



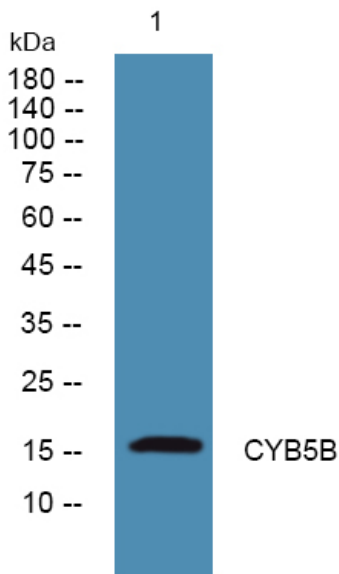
**matters needing attention**

Avoid repeated freezing and thawing!

**Usage suggestions**

This product can be used in immunological reaction related experiments. For more information, please consult technical personnel.

**Products Images**



Western blot analysis of lysates from PC12 cells, primary antibody was diluted at 1:1000, 4° over night