



# TSSC4 Polyclonal Antibody

<b>Catalog No</b>	BYab-06594
<b>Isotype</b>	IgG
<b>Reactivity</b>	Human;Mouse;Rat
<b>Applications</b>	WB;ELISA
<b>Gene Name</b>	TSSC4
<b>Protein Name</b>	Protein TSSC4 (Tumor-suppressing STF cDNA 4 protein) (Tumor-suppressing subchromosomal transferable fragment candidate gene 4 protein)
<b>Immunogen</b>	Synthesized peptide derived from part region of human protein
<b>Specificity</b>	TSSC4 Polyclonal Antibody detects endogenous levels of protein.
<b>Formulation</b>	Liquid in PBS containing 50% glycerol, and 0.02% sodium azide.
<b>Source</b>	Polyclonal, Rabbit,IgG
<b>Purification</b>	The antibody was affinity-purified from rabbit antiserum by affinity-chromatography using epitope-specific immunogen.
<b>Dilution</b>	WB 1:500-2000 ELISA 1:5000-20000
<b>Concentration</b>	1 mg/ml
<b>Purity</b>	≥90%
<b>Storage Stability</b>	-20°C/1 year
<b>Synonyms</b>	
<b>Observed Band</b>	36kD
<b>Cell Pathway</b>	
<b>Tissue Specificity</b>	Expressed in fetal brain, lung, liver and kidney. Widely expressed in adult tissues.
<b>Function</b>	similarity:Belongs to the TSSC4 family.,tissue specificity:Expressed in fetal brain, lung, liver and kidney. Widely expressed in adult tissues.,
<b>Background</b>	This gene is one of several tumor-suppressing subtransferable fragments located in the imprinted gene domain of 11p15.5, an important tumor-suppressor gene region. Alterations in this region have been associated with the Beckwith-Wiedemann syndrome, Wilms tumor, rhabdomyosarcoma, adrenocortical carcinoma, and lung, ovarian, and breast cancer. This gene is located among several imprinted genes; however, this gene, as well as the pan-hematopoietic expression gene (PHEMX), escapes imprinting. This gene may play a role in malignancies and disease that involve this region. Several transcript variants encoding two different isoforms have been found for this gene.

Nanjing BYabscience technology Co.,Ltd



[provided by RefSeq, Jul 2014],

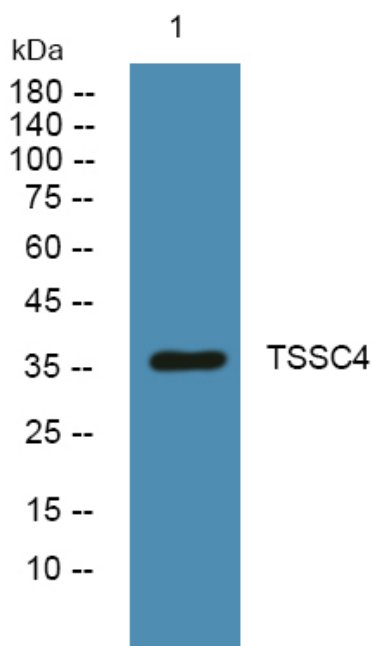
**matters needing attention**

Avoid repeated freezing and thawing!

**Usage suggestions**

This product can be used in immunological reaction related experiments. For more information, please consult technical personnel.

## Products Images



Western blot analysis of lysates from PC12 cells, primary antibody was diluted at 1:1000, 4° over night