



# TNF18 Polyclonal Antibody

<b>Catalog No</b>	BYab-06590
<b>Isotype</b>	IgG
<b>Reactivity</b>	Human;Rat;Mouse;
<b>Applications</b>	WB;ELISA
<b>Gene Name</b>	TNFSF18 AITRL GITRL TL6 UNQ149/PRO175
<b>Protein Name</b>	Tumor necrosis factor ligand superfamily member 18 (Activation-inducible TNF-related ligand) (AITRL) (Glucocorticoid-induced TNF-related ligand) (hGITRL)
<b>Immunogen</b>	Synthesized peptide derived from part region of human protein AA range: 101-150
<b>Specificity</b>	TNF18 Polyclonal Antibody detects endogenous levels of protein.
<b>Formulation</b>	Liquid in PBS containing 50% glycerol, and 0.02% sodium azide.
<b>Source</b>	Polyclonal, Rabbit,IgG
<b>Purification</b>	The antibody was affinity-purified from rabbit antiserum by affinity-chromatography using epitope-specific immunogen.
<b>Dilution</b>	WB 1:500-2000 ELISA 1:5000-20000
<b>Concentration</b>	1 mg/ml
<b>Purity</b>	≥90%
<b>Storage Stability</b>	-20°C/1 year
<b>Synonyms</b>	
<b>Observed Band</b>	21kD
<b>Cell Pathway</b>	Cell membrane ; Single-pass type II membrane protein .
<b>Tissue Specificity</b>	Expressed at high levels in the small intestine, ovary, testis, kidney and endothelial cells.
<b>Function</b>	function:Cytokine that binds to TNFRSF18/AITR/GITR. Important for interactions between activated T-lymphocytes and endothelial cells and may modulate T-lymphocyte survival in peripheral tissues.,induction:Up-regulated after stimulation by lipopolysaccharides.,similarity:Belongs to the tumor necrosis factor family.,subunit:Homotrimer .,tissue specificity:Expressed at high levels in the small intestine, ovary, testis, kidney and endothelial cells.,
<b>Background</b>	The protein encoded by this gene is a cytokine that belongs to the tumor necrosis factor (TNF) ligand family. This cytokine is a ligand for receptor TNFRSF18/AITR/GITR. It has been shown to modulate T lymphocyte survival in

Nanjing BYabscience technology Co.,Ltd



peripheral tissues. This cytokine is also found to be expressed in endothelial cells, and is thought to be important for interaction between T lymphocytes and endothelial cells. [provided by RefSeq, Jul 2008],

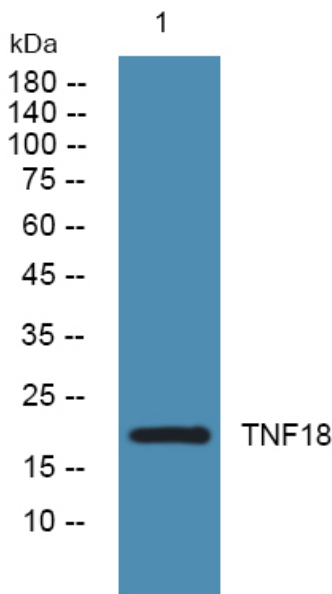
**matters needing attention**

Avoid repeated freezing and thawing!

**Usage suggestions**

This product can be used in immunological reaction related experiments. For more information, please consult technical personnel.

**Products Images**



Western blot analysis of lysates from KB cells, primary antibody was diluted at 1:1000, 4° over night