



SYWM Polyclonal Antibody

Catalog No	BYab-06587
Isotype	IgG
Reactivity	Human;Mouse
Applications	WB;ELISA
Gene Name	WARS2
Protein Name	Tryptophan--tRNA ligase, mitochondrial (EC 6.1.1.2) ((Mt)TrpRS) (Tryptophanyl-tRNA synthetase) (TrpRS)
Immunogen	Synthesized peptide derived from part region of human protein
Specificity	SYWM Polyclonal Antibody detects endogenous levels of protein.
Formulation	Liquid in PBS containing 50% glycerol, and 0.02% sodium azide.
Source	Polyclonal, Rabbit,IgG
Purification	The antibody was affinity-purified from rabbit antiserum by affinity-chromatography using epitope-specific immunogen.
Dilution	WB 1:500-2000 ELISA 1:5000-20000
Concentration	1 mg/ml
Purity	≥90%
Storage Stability	-20°C/1 year
Synonyms	
Observed Band	39kD
Cell Pathway	Mitochondrion matrix .
Tissue Specificity	Brain.
Function	catalytic activity:ATP + L-tryptophan + tRNA(Trp) = AMP + diphosphate + L-tryptophyl-tRNA(Trp).,similarity:Belongs to the class-I aminoacyl-tRNA synthetase family.,
Background	Aminoacyl-tRNA synthetases catalyze the aminoacylation of tRNA by their cognate amino acid. Because of their central role in linking amino acids with nucleotide triplets contained in tRNAs, aminoacyl-tRNA synthetases are thought to be among the first proteins that appeared in evolution. Two forms of tryptophanyl-tRNA synthetase exist, a cytoplasmic form, named WARS, and a mitochondrial form, named WARS2. This gene encodes the mitochondrial tryptophanyl-tRNA synthetase. Two alternative transcripts encoding different isoforms have been described. [provided by RefSeq, Jul 2008],

Nanjing BYabscience technology Co.,Ltd



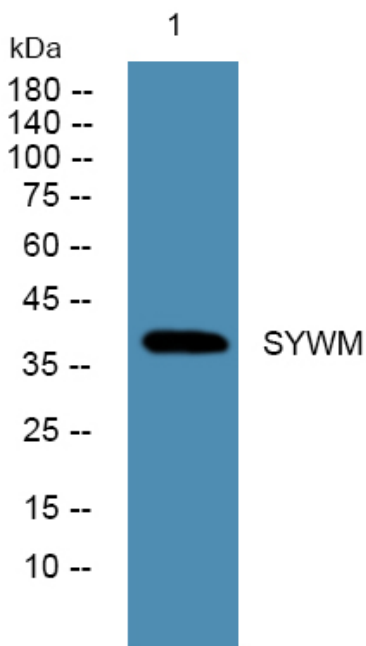
matters needing attention

Avoid repeated freezing and thawing!

Usage suggestions

This product can be used in immunological reaction related experiments. For more information, please consult technical personnel.

Products Images



Western blot analysis of lysates from KB cells, primary antibody was diluted at 1:1000, 4° over night