



# STAP2 Polyclonal Antibody

<b>Catalog No</b>	BYab-06586
<b>Isotype</b>	IgG
<b>Reactivity</b>	Human;Rat;Mouse;
<b>Applications</b>	WB;ELISA
<b>Gene Name</b>	STAP2 BKS
<b>Protein Name</b>	Signal-transducing adaptor protein 2 (STAP-2) (Breast tumor kinase substrate) (BRK substrate)
<b>Immunogen</b>	Synthesized peptide derived from part region of human protein
<b>Specificity</b>	STAP2 Polyclonal Antibody detects endogenous levels of protein.
<b>Formulation</b>	Liquid in PBS containing 50% glycerol, and 0.02% sodium azide.
<b>Source</b>	Polyclonal, Rabbit,IgG
<b>Purification</b>	The antibody was affinity-purified from rabbit antiserum by affinity-chromatography using epitope-specific immunogen.
<b>Dilution</b>	WB 1:500-2000 ELISA 1:5000-20000
<b>Concentration</b>	1 mg/ml
<b>Purity</b>	≥90%
<b>Storage Stability</b>	-20°C/1 year
<b>Synonyms</b>	
<b>Observed Band</b>	44kD
<b>Cell Pathway</b>	Cytoplasm .
<b>Tissue Specificity</b>	Widely expressed.
<b>Function</b>	function:Substrate of protein kinase PTK6. May play a regulatory role in the acute-phase response in systemic inflammation and may modulate STAT3 activity.,PTM:Phosphorylated on tyrosine. Tyr-250 may be important for interaction with kinases. Tyr-22 and Tyr-322 appears to be phosphorylated by SRC.,sequence caution:Alu insert from position 358 to 403.,similarity:Contains 1 PH domain.,similarity:Contains 1 SH2 domain.,subunit:Interacts with PTK6 and CSF1R.,tissue specificity:Widely expressed.,
<b>Background</b>	This gene encodes the substrate of breast tumor kinase, an Src-type non-receptor tyrosine kinase. The encoded protein possesses domains and several tyrosine phosphorylation sites characteristic of adaptor proteins that mediate the interactions linking proteins involved in signal transduction pathways.

Nanjing BYabscience technology Co.,Ltd



Alternative splicing results in multiple transcript variants. [provided by RefSeq, Jul 2008],

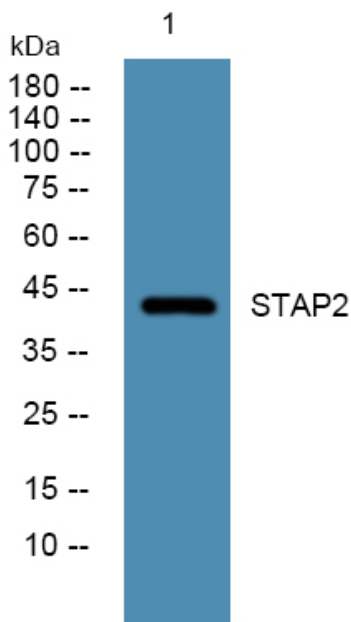
**matters needing attention**

Avoid repeated freezing and thawing!

**Usage suggestions**

This product can be used in immunological reaction related experiments. For more information, please consult technical personnel.

## Products Images



Western blot analysis of lysates from SH-SY5Y cells, primary antibody was diluted at 1:1000, 4° over night