



RM36 Polyclonal Antibody

Catalog No	BYab-06583
Isotype	IgG
Reactivity	Human;Mouse
Applications	WB;ELISA
Gene Name	MRPL36 BRIP1
Protein Name	39S ribosomal protein L36, mitochondrial (L36mt) (MRP-L36) (BRCA1-interacting protein 1)
Immunogen	Synthesized peptide derived from part region of human protein AA range: 1-50
Specificity	RM36 Polyclonal Antibody detects endogenous levels of protein.
Formulation	Liquid in PBS containing 50% glycerol, and 0.02% sodium azide.
Source	Polyclonal, Rabbit,IgG
Purification	The antibody was affinity-purified from rabbit antiserum by affinity-chromatography using epitope-specific immunogen.
Dilution	WB 1:500-2000 ELISA 1:5000-20000
Concentration	1 mg/ml
Purity	≥90%
Storage Stability	-20°C/1 year
Synonyms	
Observed Band	11kD
Cell Pathway	Mitochondrion .
Tissue Specificity	Adrenal gland,Testis,
Function	function:Component of the large subunit of mitochondrial ribosome .,similarity:Belongs to the ribosomal protein L36P family.,
Background	Mammalian mitochondrial ribosomal proteins are encoded by nuclear genes and help in protein synthesis within the mitochondrion. Mitochondrial ribosomes (mitoribosomes) consist of a small 28S subunit and a large 39S subunit. They have an estimated 75% protein to rRNA composition compared to prokaryotic ribosomes, where this ratio is reversed. Another difference between mammalian mitoribosomes and prokaryotic ribosomes is that the latter contain a 5S rRNA. Among different species, the proteins comprising the mitoribosome differ greatly in sequence, and sometimes in biochemical properties, which prevents easy recognition by sequence homology. This gene encodes a 39S subunit protein. A

Nanjing BYabscience technology Co.,Ltd



pseudogene corresponding to this gene is found on chromosome 2p. [provided by RefSeq, Jul 2008],

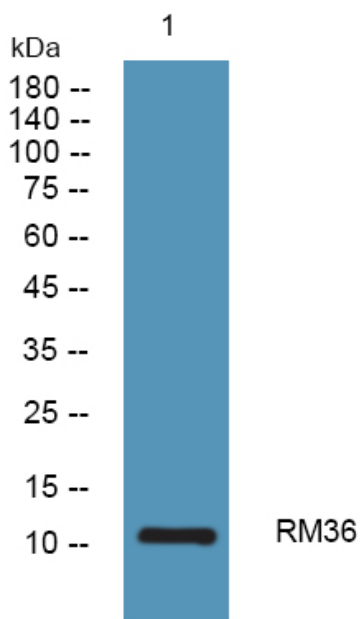
matters needing attention

Avoid repeated freezing and thawing!

Usage suggestions

This product can be used in immunological reaction related experiments. For more information, please consult technical personnel.

Products Images



Western blot analysis of lysates from K562 cells, primary antibody was diluted at 1:1000, 4° over night