



TRI31 Polyclonal Antibody

Catalog No	BYab-06567
Isotype	IgG
Reactivity	Human;Rat;Mouse;
Applications	WB;ELISA
Gene Name	TRIM31 C6orf13 RNF
Protein Name	E3 ubiquitin-protein ligase TRIM31 (EC 6.3.2.-) (Tripartite motif-containing protein 31)
Immunogen	Synthesized peptide derived from part region of human protein
Specificity	TRI31 Polyclonal Antibody detects endogenous levels of protein.
Formulation	Liquid in PBS containing 50% glycerol, and 0.02% sodium azide.
Source	Polyclonal, Rabbit,IgG
Purification	The antibody was affinity-purified from rabbit antiserum by affinity-chromatography using epitope-specific immunogen.
Dilution	WB 1:500-2000 ELISA 1:5000-20000
Concentration	1 mg/ml
Purity	≥90%
Storage Stability	-20°C/1 year
Synonyms	
Observed Band	46kD
Cell Pathway	Cytoplasm . Mitochondrion . Predominantly expressed in the cytoplasm but a fraction is associated with the mitochondria.
Tissue Specificity	Up-regulated in gastric adenocarcinomas.
Function	similarity:Belongs to the TRIM/RBCC family.,similarity:Contains 1 B box-type zinc finger.,similarity:Contains 1 RING-type zinc finger.,
Background	This gene encodes a protein that functions as an E3 ubiquitin-protein ligase. This gene shows altered expression in certain tumors and may be a negative regulator of cell growth. Alternative splicing results in multiple transcript variants. [provided by RefSeq, Jan 2016],
matters needing attention	Avoid repeated freezing and thawing!

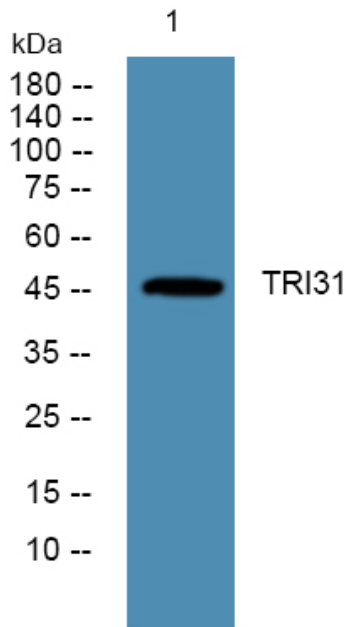
Nanjing BYabscience technology Co.,Ltd



Usage suggestions

This product can be used in immunological reaction related experiments. For more information, please consult technical personnel.

Products Images



Western blot analysis of lysates from KB cells, primary antibody was diluted at 1:1000, 4° over night