



CITE2 Polyclonal Antibody

Catalog No	BYab-06559
Isotype	IgG
Reactivity	Human;Mouse
Applications	WB;ELISA
Gene Name	CITED2 MRG1
Protein Name	Cbp/p300-interacting transactivator 2 (MSG-related protein 1) (MRG-1) (P35srj)
Immunogen	Synthesized peptide derived from human protein . at AA range: 190-270
Specificity	CITE2 Polyclonal Antibody detects endogenous levels of protein.
Formulation	Liquid in PBS containing 50% glycerol, and 0.02% sodium azide.
Source	Polyclonal, Rabbit,IgG
Purification	The antibody was affinity-purified from rabbit antiserum by affinity-chromatography using epitope-specific immunogen.
Dilution	WB 1:500-2000 ELISA 1:5000-20000
Concentration	1 mg/ml
Purity	≥90%
Storage Stability	-20°C/1 year
Synonyms	
Observed Band	29kD
Cell Pathway	Nucleus . Colocalizes with EP300 in dot-like structures.
Tissue Specificity	Pancreas,
Function	function:Interferes with the binding of transcription factors HIF-1a and STAT2 to p300/CBP .,induction:By hypoxia and deferoxamine .,similarity:Belongs to the CITED family .,subunit:Binds to the p300/CBP CH1 region .,
Background	Cbp/p300 interacting transactivator with Glu/Asp rich carboxy-terminal domain 2(CITED2) Homo sapiens The protein encoded by this gene inhibits transactivation of HIF1A-induced genes by competing with binding of hypoxia-inducible factor 1-alpha to p300-CH1. Mutations in this gene are a cause of cardiac septal defects. Alternatively spliced transcript variants encoding multiple isoforms have been observed for this gene. [provided by RefSeq, May 2012],

Nanjing BYabscience technology Co.,Ltd



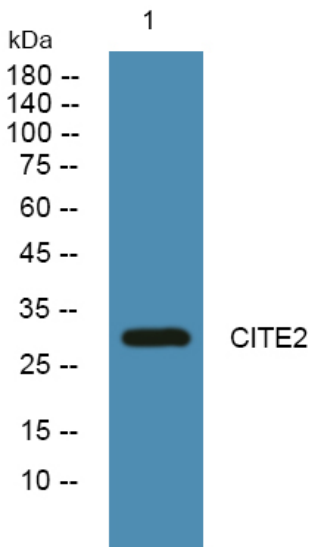
matters needing attention

Avoid repeated freezing and thawing!

Usage suggestions

This product can be used in immunological reaction related experiments. For more information, please consult technical personnel.

Products Images



Western blot analysis of lysates from SH-SY5Y cells, primary antibody was diluted at 1:1000, 4° over night