



# CITE4 Polyclonal Antibody

<b>Catalog No</b>	BYab-06553
<b>Isotype</b>	IgG
<b>Reactivity</b>	Human;Mouse;Rat
<b>Applications</b>	WB;ELISA
<b>Gene Name</b>	CITED4 MRG2
<b>Protein Name</b>	Cbp/p300-interacting transactivator 4 (MSG1-related protein 2) (MRG-2)
<b>Immunogen</b>	Synthesized peptide derived from human protein . at AA range: 30-110
<b>Specificity</b>	CITE4 Polyclonal Antibody detects endogenous levels of protein.
<b>Formulation</b>	Liquid in PBS containing 50% glycerol, and 0.02% sodium azide.
<b>Source</b>	Polyclonal, Rabbit,IgG
<b>Purification</b>	The antibody was affinity-purified from rabbit antiserum by affinity-chromatography using epitope-specific immunogen.
<b>Dilution</b>	WB 1:500-2000 ELISA 1:5000-20000
<b>Concentration</b>	1 mg/ml
<b>Purity</b>	≥90%
<b>Storage Stability</b>	-20°C/1 year
<b>Synonyms</b>	
<b>Observed Band</b>	20kD
<b>Cell Pathway</b>	Nucleus . Cytoplasm .
<b>Tissue Specificity</b>	Expressed in most tissues examined with highest levels of expression in heart, liver, skeletal muscle and pancreas. Also expressed in bladder cell line ECV-304 and in various breast cancer cell lines. Also detected in both in situ and invasive breast tumors where its expression is down-regulated and mostly restricted to the cytoplasm of malignant epithelium. Down-regulation of expression is associated with elevated levels of HIF1A and increased tumor growth and angiogenesis.
<b>Function</b>	function:Acts as transcriptional coactivator for TFAP2/AP-2. May function as an inhibitor of transactivation by HIF1A by disrupting HIF1A interaction with CREBBP. May be involved in regulation of gene expression during development and differentiation of blood cells, endothelial cells and mammary epithelial cells.,similarity:Belongs to the CITED family.,subunit:Interacts via its C-terminal region with the CH1 domain of CREBBP and EP300. Interacts with all TFAP2/AP-2 isoforms.,tissue specificity:Expressed in most tissues examined with highest levels of expression in heart, liver, skeletal muscle and pancreas. Also

**Nanjing BYabscience technology Co.,Ltd**



expressed in bladder cell line ECV304 and in various breast cancer cell lines. Also detected in both in situ and invasive breast tumors where its expression is down-regulated and mostly restricted to the cytoplasm of malignant epithelium. Down-regulation of expression is associat

### Background

Cbp/p300 interacting transactivator with Glu/Asp rich carboxy-terminal domain 4(CITED4) Homo sapiens The protein encoded by this intronless gene belongs to the CITED family of transcriptional coactivators that bind to several proteins, including CREB-binding protein (CBP) and p300, via a conserved 32 aa C-terminal motif, and regulate gene transcription. This protein also interacts with transcription factor AP2 (TFAP2), and thus may function as a co-activator for TFAP2. Hypermethylation and transcriptional downregulation of this gene has been observed in oligodendroglial tumors with deletions of chromosomal arms 1p and 19q, and associated with longer recurrence-free and overall survival of patients with oligodendroglial tumors. [provided by RefSeq, Aug 2011],

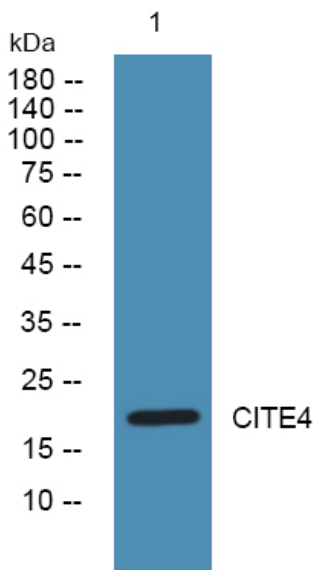
### matters needing attention

Avoid repeated freezing and thawing!

### Usage suggestions

This product can be used in immunological reaction related experiments. For more information, please consult technical personnel.

## Products Images



Western blot analysis of lysates from DU145 cells, primary antibody was diluted at 1:1000, 4° over night