



MRCKG Polyclonal Antibody

Catalog No	BYab-06512
Isotype	IgG
Reactivity	Human;Rat;Mouse;
Applications	WB;ELISA
Gene Name	CDC42BPG DMPK2
Protein Name	Serine/threonine-protein kinase MRCK gamma (EC 2.7.11.1) (CDC42-binding protein kinase gamma) (DMPK-like gamma) (Myotonic dystrophy kinase-related CDC42-binding kinase gamma) (MRCK gamma) (MRCKG) (Myo
Immunogen	Synthesized peptide derived from human protein . at AA range: 1370-1450
Specificity	MRCKG Polyclonal Antibody detects endogenous levels of protein.
Formulation	Liquid in PBS containing 50% glycerol, and 0.02% sodium azide.
Source	Polyclonal, Rabbit,IgG
Purification	The antibody was affinity-purified from rabbit antiserum by affinity-chromatography using epitope-specific immunogen.
Dilution	WB 1:500-2000 ELISA 1:5000-20000
Concentration	1 mg/ml
Purity	≥90%
Storage Stability	-20°C/1 year
Synonyms	
Observed Band	170kD
Cell Pathway	Cytoplasm . Concentrates at the leading edge of cells.
Tissue Specificity	Expressed in heart and skeletal muscle.
Function	catalytic activity:ATP + a protein = ADP + a phosphoprotein.,cofactor:Magnesium.,enzyme regulation:Maintained in an inactive, closed conformation by an interaction between the kinase domain and the negative autoregulatory C-terminal coiled-coil region. Agonist binding to the phorbol ester binding site disrupts this, releasing the kinase domain to allow N-terminus-mediated dimerization and kinase activation by transautophosphorylation.,function:May act as a downstream effector of CDC42 in cytoskeletal reorganization. Contributes to the actomyosin contractility required for cell invasion, through the regulation of MYPT1 and thus MLC2 phosphorylation.,similarity:Belongs to the protein kinase superfamily. AGC Ser/Thr protein kinase family. DMPK subfamily.,similarity:Contains 1 AGC-kinase

Nanjing BYabscience technology Co.,Ltd



C-terminal domain.,similarity:Contains 1 CNH domain.,similarity:Contains 1 CRIB domain.,similarity:Contai

Background

catalytic activity:ATP + a protein = ADP + a phosphoprotein.,cofactor:Magnesium.,enzyme regulation:Maintained in an inactive, closed conformation by an interaction between the kinase domain and the negative autoregulatory C-terminal coiled-coil region. Agonist binding to the phorbol ester binding site disrupts this, releasing the kinase domain to allow N-terminus-mediated dimerization and kinase activation by transautophosphorylation.,function:May act as a downstream effector of CDC42 in cytoskeletal reorganization. Contributes to the actomyosin contractility required for cell invasion, through the regulation of MYPT1 and thus MLC2 phosphorylation.,similarity:Belongs to the protein kinase superfamily. AGC Ser/Thr protein kinase family. DMPK subfamily.,similarity:Contains 1 AGC-kinase C-terminal domain.,similarity:Contains 1 CNH domain.,similarity:Contains 1 CRIB domain.,similarity:Contains 1 PH domain.,similarity:Contains 1 phorbol-ester/DAG-type zinc finger.,similarity:Contains 1 protein kinase domain.,subcellular location:Concentrates at the leading edge of cells.,subunit:Homodimer and homotetramer via the coiled coil regions. Interacts tightly with GTP-bound but not GDP-bound CDC42.,tissue specificity:Expressed in heart and skeletal muscle.,

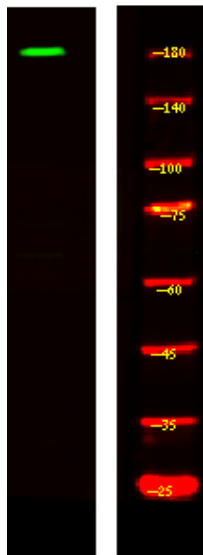
matters needing attention

Avoid repeated freezing and thawing!

Usage suggestions

This product can be used in immunological reaction related experiments. For more information, please consult technical personnel.

Products Images



Western Blot analysis of HEK293 lysis, using primary antibody at 1:1000 dilution. Secondary antibody(catalog#:RS23920) was diluted at 1:10000