



# MAGG1 Polyclonal Antibody

<b>Catalog No</b>	BYab-06481
<b>Isotype</b>	IgG
<b>Reactivity</b>	Human;Mouse
<b>Applications</b>	WB;ELISA
<b>Gene Name</b>	NDNL2 HCA4 MAGEG1
<b>Protein Name</b>	Melanoma-associated antigen G1 (Hepatocellular carcinoma-associated protein 4) (MAGE-G1 antigen) (Necdin-like protein 2)
<b>Immunogen</b>	Synthesized peptide derived from human protein . at AA range: 110-190
<b>Specificity</b>	MAGG1 Polyclonal Antibody detects endogenous levels of protein.
<b>Formulation</b>	Liquid in PBS containing 50% glycerol, and 0.02% sodium azide.
<b>Source</b>	Polyclonal, Rabbit,IgG
<b>Purification</b>	The antibody was affinity-purified from rabbit antiserum by affinity-chromatography using epitope-specific immunogen.
<b>Dilution</b>	WB 1:500-2000 ELISA 1:5000-20000
<b>Concentration</b>	1 mg/ml
<b>Purity</b>	≥90%
<b>Storage Stability</b>	-20°C/1 year
<b>Synonyms</b>	
<b>Observed Band</b>	33kD
<b>Cell Pathway</b>	Cytoplasm . Nucleus . Chromosome, telomere .
<b>Tissue Specificity</b>	Ubiquitous.
<b>Function</b>	function:Growth suppressor that facilitates the entry of the cell into cell cycle arrest.,PTM:Phosphorylated upon DNA damage, probably by ATM or ATR.,similarity:Contains 1 MAGE domain.,subunit:Binds the C-terminus of E2F1 and NGFR.,tissue specificity:Ubiquitous.,
<b>Background</b>	The protein encoded by this gene is part of the SMC5-6 chromatin reorganizing complex and is a member of the MAGE superfamily. This is an intronless gene. [provided by RefSeq, May 2011],
<b>matters needing attention</b>	Avoid repeated freezing and thawing!

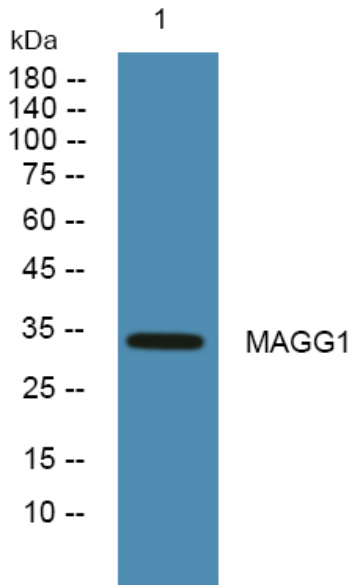
Nanjing BYabscience technology Co.,Ltd



### Usage suggestions

This product can be used in immunological reaction related experiments. For more information, please consult technical personnel.

## Products Images



Western blot analysis of lysates from DU145 cells, primary antibody was diluted at 1:1000, 4° over night