



MAGB2 Polyclonal Antibody

Catalog No	BYab-06472
Isotype	IgG
Reactivity	Human;Rat;Mouse;
Applications	WB;ELISA
Gene Name	MAGEB2
Protein Name	Melanoma-associated antigen B2 (Cancer/testis antigen 3.2) (CT3.2) (DSS-AHC critical interval MAGE superfamily 6) (DAM6) (MAGE XP-2 antigen) (MAGE-B2 antigen)
Immunogen	Synthesized peptide derived from human protein . at AA range: 30-110
Specificity	MAGB2 Polyclonal Antibody detects endogenous levels of protein.
Formulation	Liquid in PBS containing 50% glycerol, and 0.02% sodium azide.
Source	Polyclonal, Rabbit,IgG
Purification	The antibody was affinity-purified from rabbit antiserum by affinity-chromatography using epitope-specific immunogen.
Dilution	WB 1:500-2000 ELISA 1:5000-20000
Concentration	1 mg/ml
Purity	≥90%
Storage Stability	-20°C/1 year
Synonyms	
Observed Band	35kD
Cell Pathway	
Tissue Specificity	Expressed in testis and placenta, and in a significant fraction of tumors of various histologic types.
Function	similarity:Contains 1 MAGE domain.,tissue specificity:Expressed in testis and placenta, and in a significant fraction of tumors of various histologic types.,
Background	This gene is a member of the MAGEB gene family. The members of this family have their entire coding sequences located in the last exon, and the encoded proteins show 50 to 68% sequence identity to each other. The promoters and first exons of the MAGEB genes show considerable variability, suggesting that the existence of this gene family enables the same function to be expressed under different transcriptional controls. This gene is localized in the DSS (dosage-sensitive sex reversal) critical region. It is expressed in testis and placenta, and in a significant fraction of tumors of various histological types. The

Nanjing BYabscience technology Co.,Ltd



MAGEB genes are clustered on chromosome Xp22-p21. [provided by RefSeq, Jul 2008],

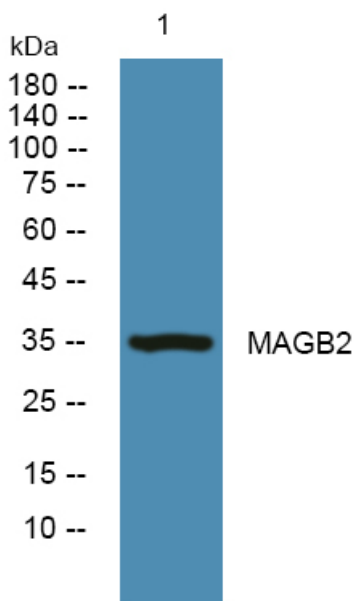
matters needing attention

Avoid repeated freezing and thawing!

Usage suggestions

This product can be used in immunological reaction related experiments. For more information, please consult technical personnel.

Products Images



Western blot analysis of lysates from SW480 cells, primary antibody was diluted at 1:1000, 4° over night