



FA58A Polyclonal Antibody

Catalog No	BYab-06460
Isotype	IgG
Reactivity	Human;Mouse;Rat
Applications	WB;ELISA
Gene Name	FAM58A
Protein Name	Cyclin-related protein FAM58A (Cyclin-M)
Immunogen	Synthesized peptide derived from human protein . at AA range: 30-110
Specificity	FA58A Polyclonal Antibody detects endogenous levels of protein.
Formulation	Liquid in PBS containing 50% glycerol, and 0.02% sodium azide.
Source	Polyclonal, Rabbit,IgG
Purification	The antibody was affinity-purified from rabbit antiserum by affinity-chromatography using epitope-specific immunogen.
Dilution	WB 1:500-2000 ELISA 1:5000-20000
Concentration	1 mg/ml
Purity	≥90%
Storage Stability	-20°C/1 year
Synonyms	
Observed Band	27kD
Cell Pathway	cyclin-dependent protein kinase holoenzyme complex,nucleus,
Tissue Specificity	B-cell,Blood,Kidney,Lung,
Function	disease:Defects in FAM58A are the cause of toe syndactyly, telecanthus, and anogenital and renal malformations (STAR) [MIM:300707]; also known as STAR syndrome or syndactyly with renal and anogenital malformations.,function:May have a role in cell proliferation.,similarity:Belongs to the cyclin family. Cyclin-like FAM58 subfamily.,subunit:Interacts with SALL1.,
Background	Mutations in this gene have been shown to cause an X-linked dominant STAR syndrome that typically manifests syndactyly, telecanthus and anogenital and renal malformations. The protein encoded by this gene contains a cyclin-box-fold domain which suggests it may have a role in controlling nuclear cell division cycles. Alternative splicing results in multiple transcript variants encoding distinct isoforms. [provided by RefSeq, Oct 2008],

Nanjing BYabscience technology Co.,Ltd



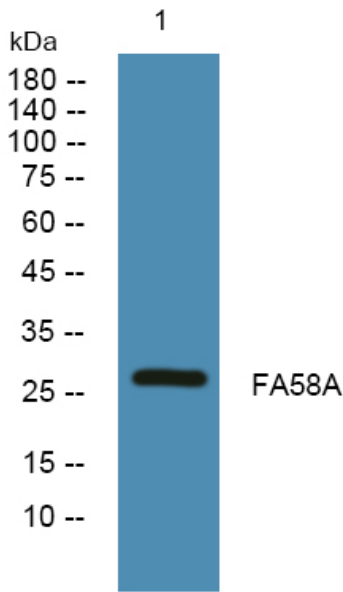
matters needing attention

Avoid repeated freezing and thawing!

Usage suggestions

This product can be used in immunological reaction related experiments. For more information, please consult technical personnel.

Products Images



Western blot analysis of lysates from PC12 cells, primary antibody was diluted at 1:1000, 4° over night