



CENPO Polyclonal Antibody

Catalog No	BYab-06450
Isotype	IgG
Reactivity	Human;Rat;Mouse;
Applications	WB;ELISA
Gene Name	CENPO ICEN36 MCM21R
Protein Name	Centromere protein O (CENP-O) (Interphase centromere complex protein 36)
Immunogen	Synthesized peptide derived from human protein . at AA range: 220-300
Specificity	CENPO Polyclonal Antibody detects endogenous levels of protein.
Formulation	Liquid in PBS containing 50% glycerol, and 0.02% sodium azide.
Source	Polyclonal, Rabbit,IgG
Purification	The antibody was affinity-purified from rabbit antiserum by affinity-chromatography using epitope-specific immunogen.
Dilution	WB 1:500-2000 ELISA 1:5000-20000
Concentration	1 mg/ml
Purity	≥90%
Storage Stability	-20°C/1 year
Synonyms	
Observed Band	33kD
Cell Pathway	Nucleus. Chromosome, centromere. Chromosome, centromere, kinetochore. The CENPA-CAD complex is probably recruited on centromeres by the CENPA-NAC complex.
Tissue Specificity	Lung,Placenta,
Function	function:Component of the CENPA-CAD (nucleosome distal) complex, a complex recruited to centromeres which is involved in assembly of kinetochore proteins, mitotic progression and chromosome segregation. May be involved in incorporation of newly synthesized CENPA into centromeres via its interaction with the CENPA-NAC complex.,subcellular location:Localizes exclusively in the centromeres. The CENPA-CAD complex is probably recruited on centromeres by the CENPA-NAC complex.,subunit:Component of the CENPA-CAD complex, composed of CENPI, CENPK, CENPL, CENPO, CENPP, CENPQ, CENPR and CENPS. The CENPA-CAD complex interacts with the CENPA-NAC complex, at least composed of CENPA, CENPC, CENPH, CENPM, CENPN, CENPT and MLF1IP/CENPU.,

Nanjing BYabscience technology Co.,Ltd



Background

This gene encodes a component of the interphase centromere complex. The encoded protein is localized to the centromere throughout the cell cycle and is required for bipolar spindle assembly, chromosome segregation and checkpoint signaling during mitosis. Alternatively spliced transcript variants encoding multiple protein isoforms have been observed for this gene. [provided by RefSeq, Dec 2010],

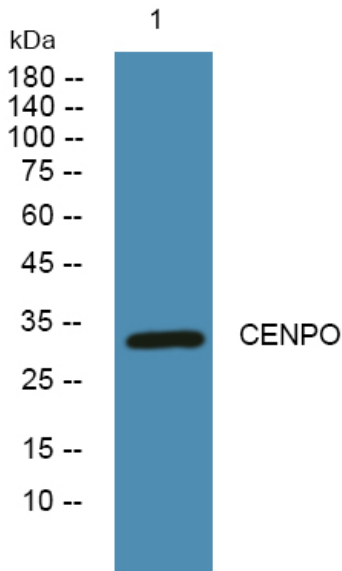
matters needing attention

Avoid repeated freezing and thawing!

Usage suggestions

This product can be used in immunological reaction related experiments. For more information, please consult technical personnel.

Products Images



Western blot analysis of lysates from SW480 cells, primary antibody was diluted at 1:1000, 4° over night