



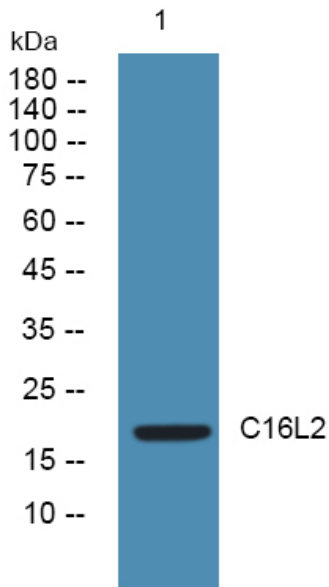
C16L2 Polyclonal Antibody

Catalog No	BYab-06426
Isotype	IgG
Reactivity	Human;Rat;Mouse;
Applications	WB;ELISA
Gene Name	CD164L2 UNQ6122/PRO20044
Protein Name	CD164 sialomucin-like 2 protein
Immunogen	Synthesized peptide derived from human protein . at AA range: 20-100
Specificity	C16L2 Polyclonal Antibody detects endogenous levels of protein.
Formulation	Liquid in PBS containing 50% glycerol, and 0.02% sodium azide.
Source	Polyclonal, Rabbit,IgG
Purification	The antibody was affinity-purified from rabbit antiserum by affinity-chromatography using epitope-specific immunogen.
Dilution	WB 1:500-2000 ELISA 1:5000-20000
Concentration	1 mg/ml
Purity	≥90%
Storage Stability	-20°C/1 year
Synonyms	
Observed Band	19kD
Cell Pathway	Membrane ; Single-pass type I membrane protein .
Tissue Specificity	
Function	similarity:Belongs to the CD164 family.,
Background	similarity:Belongs to the CD164 family.,
matters needing attention	Avoid repeated freezing and thawing!
Usage suggestions	This product can be used in immunological reaction related experiments. For more information, please consult technical personnel.

Nanjing BYabscience technology Co.,Ltd



Products Images



Western blot analysis of lysates from SW480 cells, primary antibody was diluted at 1:1000, 4° over night