



ZA2G Polyclonal Antibody

Catalog No	BYab-06421
Isotype	IgG
Reactivity	Human;Rat;Mouse;
Applications	WB;ELISA
Gene Name	AZGP1 ZAG ZNGP1
Protein Name	Zinc-alpha-2-glycoprotein (Zn-alpha-2-GP) (Zn-alpha-2-glycoprotein)
Immunogen	Synthesized peptide derived from part region of human protein
Specificity	ZA2G Polyclonal Antibody detects endogenous levels of protein.
Formulation	Liquid in PBS containing 50% glycerol, and 0.02% sodium azide.
Source	Polyclonal, Rabbit,IgG
Purification	The antibody was affinity-purified from rabbit antiserum by affinity-chromatography using epitope-specific immunogen.
Dilution	WB 1:500-2000 ELISA 1:5000-20000
Concentration	1 mg/ml
Purity	≥90%
Storage Stability	-20°C/1 year
Synonyms	
Observed Band	32kD
Cell Pathway	Secreted.
Tissue Specificity	Blood plasma, seminal plasma, urine, saliva, sweat, epithelial cells of various human glands, liver.
Function	function:Stimulates lipid degradation in adipocytes and causes the extensive fat losses associated with some advanced cancers. May bind polyunsaturated fatty acids.,similarity:Belongs to the MHC class I family.,similarity:Contains 1 Ig-like C1-type (immunoglobulin-like) domain.,subunit:Interacts with PIP.,tissue specificity:Blood plasma, seminal plasma, urine, saliva, sweat, epithelial cells of various human glands, liver.,
Background	function:Stimulates lipid degradation in adipocytes and causes the extensive fat losses associated with some advanced cancers. May bind polyunsaturated fatty acids.,similarity:Belongs to the MHC class I family.,similarity:Contains 1 Ig-like C1-type (immunoglobulin-like) domain.,subunit:Interacts with PIP.,tissue specificity:Blood plasma, seminal plasma, urine, saliva, sweat, epithelial cells of

Nanjing BYabscience technology Co.,Ltd



various human glands, liver.,

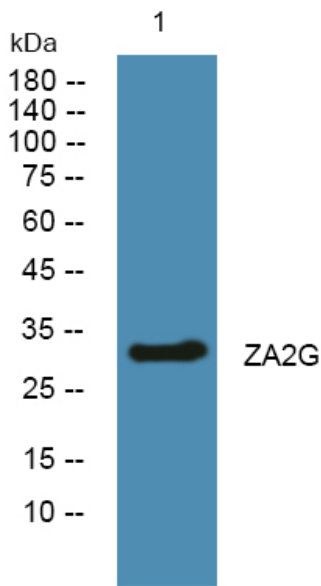
matters needing attention

Avoid repeated freezing and thawing!

Usage suggestions

This product can be used in immunological reaction related experiments. For more information, please consult technical personnel.

Products Images



Western blot analysis of lysates from U2OS cells, primary antibody was diluted at 1:1000, 4° over night