



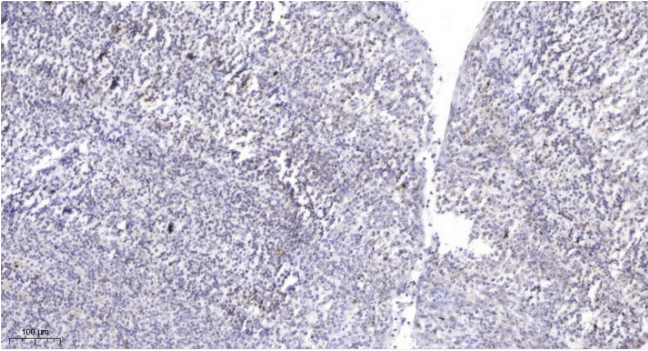
ZFH2 Polyclonal Antibody

Catalog No	BYab-06408
Isotype	IgG
Reactivity	Human;Rat;Mouse;
Applications	IHC;IF
Gene Name	ZFH2 KIAA1056 KIAA1762 ZNF409
Protein Name	Zinc finger homeobox protein 2 (Zinc finger homeodomain protein 2) (ZFH-2)
Immunogen	Synthesized peptide derived from part region of human protein
Specificity	ZFH2 Polyclonal Antibody detects endogenous levels of protein.
Formulation	Liquid in PBS containing 50% glycerol, and 0.02% sodium azide.
Source	Polyclonal, Rabbit,IgG
Purification	The antibody was affinity-purified from rabbit antiserum by affinity-chromatography using epitope-specific immunogen.
Dilution	IHC-p 1:50-300. IF 1:50-200
Concentration	1 mg/ml
Purity	≥90%
Storage Stability	-20°C/1 year
Synonyms	
Observed Band	282kD
Cell Pathway	Nucleus .
Tissue Specificity	Brain,
Function	function:May be involved in transcriptional regulation.,similarity:Contains 3 homeobox DNA-binding domains.,similarity:Contains 6 C2H2-type zinc fingers.,
Background	function:May be involved in transcriptional regulation.,similarity:Contains 3 homeobox DNA-binding domains.,similarity:Contains 6 C2H2-type zinc fingers.,
matters needing attention	Avoid repeated freezing and thawing!
Usage suggestions	This product can be used in immunological reaction related experiments. For more information, please consult technical personnel.

Nanjing BYabscience technology Co.,Ltd



Products Images



Immunohistochemical analysis of paraffin-embedded human tonsil. 1, Antibody was diluted at 1:200(4° overnight). 2, Tris-EDTA,pH9.0 was used for antigen retrieval. 3,Secondary antibody was diluted at 1:200(room temperature, 45min).