



WFDC1 Polyclonal Antibody

Catalog No	BYab-06400
Isotype	IgG
Reactivity	Human;Rat;Mouse
Applications	WB;ELISA
Gene Name	WFDC1 PS20
Protein Name	WAP four-disulfide core domain protein 1 (Prostate stromal protein ps20) (ps20 growth inhibitor)
Immunogen	Synthesized peptide derived from part region of human protein
Specificity	WFDC1 Polyclonal Antibody detects endogenous levels of protein.
Formulation	Liquid in PBS containing 50% glycerol, and 0.02% sodium azide.
Source	Polyclonal, Rabbit,IgG
Purification	The antibody was affinity-purified from rabbit antiserum by affinity-chromatography using epitope-specific immunogen.
Dilution	WB 1:500-2000 ELISA 1:5000-20000
Concentration	1 mg/ml
Purity	≥90%
Storage Stability	-20°C/1 year
Synonyms	
Observed Band	24kD
Cell Pathway	Secreted .
Tissue Specificity	Colon,Kidney,Placenta,Prostate,Stomach,Uterus,
Function	function:Has growth inhibitory activity.,similarity:Contains 1 WAP domain.,
Background	WAP four-disulfide core domain 1(WFDC1) Homo sapiens This gene encodes a member of the WAP-type four disulfide core domain family. The WAP-type four-disulfide core domain contains eight cysteines forming four disulfide bonds at the core of the protein, and functions as a protease inhibitor in many family members. This gene is mapped to chromosome 16q24, an area of frequent loss of heterozygosity in cancers, including prostate, breast and hepatocellular cancers and Wilms's tumor. This gene is downregulated in many cancer types and may be involved in the inhibition of cell proliferation. The encoded protein may also play a role in the susceptibility of certain CD4 memory T cells to human

Nanjing BYabscience technology Co.,Ltd



immunodeficiency virus infection. Alternative splicing results in multiple transcript variants. [provided by RefSeq, Sep 2013],

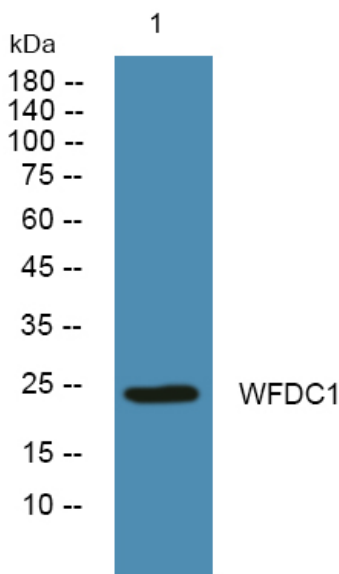
matters needing attention

Avoid repeated freezing and thawing!

Usage suggestions

This product can be used in immunological reaction related experiments. For more information, please consult technical personnel.

Products Images



Western blot analysis of lysates from A431 cells, primary antibody was diluted at 1:1000, 4° over night