



CCG8 Polyclonal Antibody

Catalog No	BYab-06394
Isotype	IgG
Reactivity	Human;Mouse;Rat
Applications	WB;ELISA
Gene Name	CACNG8 CACNG6
Protein Name	Voltage-dependent calcium channel gamma-8 subunit (Neuronal voltage-gated calcium channel gamma-8 subunit) (Transmembrane AMPAR regulatory protein gamma-8) (TARP gamma-8)
Immunogen	Synthesized peptide derived from human protein . at AA range: 140-220
Specificity	CCG8 Polyclonal Antibody detects endogenous levels of protein.
Formulation	Liquid in PBS containing 50% glycerol, and 0.02% sodium azide.
Source	Polyclonal, Rabbit,IgG
Purification	The antibody was affinity-purified from rabbit antiserum by affinity-chromatography using epitope-specific immunogen.
Dilution	WB 1:500-2000 ELISA 1:5000-20000
Concentration	1 mg/ml
Purity	≥90%
Storage Stability	-20°C/1 year
Synonyms	
Observed Band	46kD
Cell Pathway	Cell membrane ; Multi-pass membrane protein . Cell junction, synapse, postsynaptic density membrane .
Tissue Specificity	Detected in heart left ventricle.
Function	function:Thought to stabilize the calcium channel in an inactivated (closed) state.,similarity:Belongs to the PMP-22/EMP/MP20 family. CACNG subfamily.,subunit:The L-type calcium channel is composed of five subunits: alpha-1, alpha-2/delta, beta and gamma.,
Background	calcium voltage-gated channel auxiliary subunit gamma 8(CACNG8) Homo sapiens The protein encoded by this gene is a type I transmembrane AMPA receptor regulatory protein (TARP). TARPs regulate both trafficking and channel gating of the AMPA receptors. This gene is part of a functionally diverse eight-member protein subfamily of the PMP-22/EMP/MP20 family and is located in a cluster with two family members, a type II TARP and a calcium channel

Nanjing BYabscience technology Co.,Ltd



gamma subunit. The mRNA for this gene is believed to initiate translation from a non-AUG (CUG) start codon. [provided by RefSeq, Dec 2010],

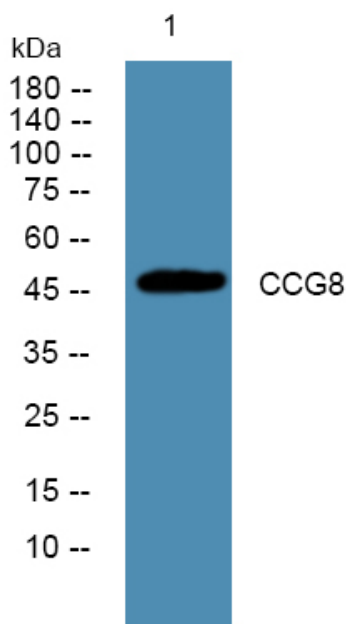
matters needing attention

Avoid repeated freezing and thawing!

Usage suggestions

This product can be used in immunological reaction related experiments. For more information, please consult technical personnel.

Products Images



Western blot analysis of lysates from A431 cells, primary antibody was diluted at 1:1000, 4°over night