



# SEC20 Polyclonal Antibody

<b>Catalog No</b>	BYab-06391
<b>Isotype</b>	IgG
<b>Reactivity</b>	Human;Rat;Mouse
<b>Applications</b>	WB;ELISA
<b>Gene Name</b>	BNIP1 NIP1 SEC20L TRG8
<b>Protein Name</b>	Vesicle transport protein SEC20 (BCL2/adenovirus E1B 19 kDa protein-interacting protein 1) (Transformation-related gene 8 protein) (TRG-8)
<b>Immunogen</b>	Synthesized peptide derived from part region of human protein
<b>Specificity</b>	SEC20 Polyclonal Antibody detects endogenous levels of protein.
<b>Formulation</b>	Liquid in PBS containing 50% glycerol, and 0.02% sodium azide.
<b>Source</b>	Polyclonal, Rabbit,IgG
<b>Purification</b>	The antibody was affinity-purified from rabbit antiserum by affinity-chromatography using epitope-specific immunogen.
<b>Dilution</b>	WB 1:500-2000 ELISA 1:5000-20000
<b>Concentration</b>	1 mg/ml
<b>Purity</b>	≥90%
<b>Storage Stability</b>	-20°C/1 year
<b>Synonyms</b>	
<b>Observed Band</b>	25kD
<b>Cell Pathway</b>	Endoplasmic reticulum membrane ; Single-pass type IV membrane protein . Mitochondrion membrane ; Single-pass type IV membrane protein . Localization to the mitochondrion is regulated by RNF186. .
<b>Tissue Specificity</b>	Isoform 1 is highly expressed in heart, brain, liver skeletal muscle and pancreas. Isoform 3 is moderately expressed in placenta, lung and kidney. Isoform 4 is highly expressed in testis and small intestine.
<b>Function</b>	alternative products:Additional isoforms seem to exist,function:SNARE that may be involved in targeting and fusion of Golgi-derived retrograde transport vesicles with the ER. Required for maintenance of ER network. Implicated in the suppression of cell death.,miscellaneous:Silencing of BNIP1 disrupts ER morphology.,similarity:Belongs to the SEC20 family.,subunit:Component of a SNARE complex consisting of STX18, USE1L, BNIP1/SEC20L and SEC22B. Interacts directly with STX18, RINT1/TIP20L and NAPA. Interacts with ZW10 through RINT1. Interacts with BCL2 and adenovirus E1B 19 kDa protein.,tissue specificity:High levels of isoform 1 in heart, brain, liver skeletal muscle and

Nanjing BYabscience technology Co.,Ltd



pancreas. Moderate levels of isoform 3 in placenta, lung and kidney. High levels of isoform 4 in testis and small intestine.,

**Background**

This gene is a member of the BCL2/adenovirus E1B 19 kd-interacting protein (BNIP) family. It interacts with the E1B 19 kDa protein, which protects cells from virally-induced cell death. The encoded protein also interacts with E1B 19 kDa-like sequences of BCL2, another apoptotic protector. In addition, this protein is involved in vesicle transport into the endoplasmic reticulum. Alternative splicing of this gene results in four protein products with identical N- and C-termini. [provided by RefSeq, Mar 2011],

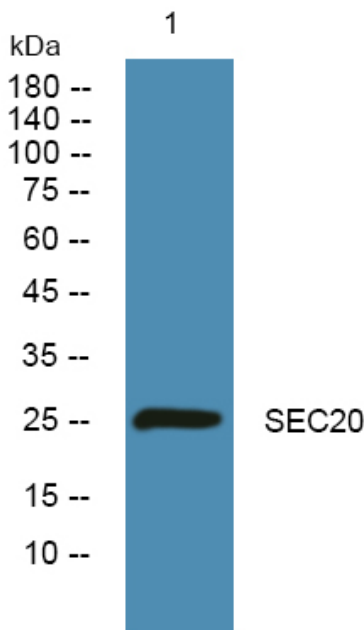
**matters needing attention**

Avoid repeated freezing and thawing!

**Usage suggestions**

This product can be used in immunological reaction related experiments. For more information, please consult technical personnel.

**Products Images**



Western blot analysis of lysates from Jarkat cells, primary antibody was diluted at 1:1000, 4° over night