



UBE2K Polyclonal Antibody

Catalog No	BYab-06371
Isotype	IgG
Reactivity	Human;Mouse
Applications	WB;ELISA
Gene Name	UBE2K HIP2 LIG
Protein Name	Ubiquitin-conjugating enzyme E2 K (EC 6.3.2.19) (Huntingtin-interacting protein 2) (HIP-2) (Ubiquitin carrier protein) (Ubiquitin-conjugating enzyme E2-25 kDa) (Ubiquitin-conjugating enzyme E2(25K)) (
Immunogen	Synthesized peptide derived from part region of human protein
Specificity	UBE2K Polyclonal Antibody detects endogenous levels of protein.
Formulation	Liquid in PBS containing 50% glycerol, and 0.02% sodium azide.
Source	Polyclonal, Rabbit,IgG
Purification	The antibody was affinity-purified from rabbit antiserum by affinity-chromatography using epitope-specific immunogen.
Dilution	WB 1:500-2000 ELISA 1:5000-20000
Concentration	1 mg/ml
Purity	≥90%
Storage Stability	-20°C/1 year
Synonyms	
Observed Band	22kD
Cell Pathway	Cytoplasm .
Tissue Specificity	Expressed in all tissues tested, including spleen, thymus, prostate, testis, ovary, small intestine, colon, peripheral blood leukocytes, T-lymphocytes, monocytes, granulocytes and bone marrow mononuclear cells. Highly expressed in brain, with highest levels found in cortex and striatum and at lower levels in cerebellum and brainstem.
Function	catalytic activity:ATP + ubiquitin + protein lysine = AMP + diphosphate + protein N-ubiquityllysine.,function:Catalyzes the covalent attachment of ubiquitin to other proteins. Mediates the selective degradation of short-lived and abnormal proteins. Ubiquitinates huntingtin. May mediate foam cell formation by the suppression of apoptosis of lipid-bearing macrophages through ubiquitination and subsequence degradation of p53.,induction:By aggregated low-density lipoprotein.,pathway:Protein modification; protein

Nanjing BYabscience technology Co.,Ltd



ubiquitination.,PTM:Sumoylation at Lys-14 impairs catalytic activity.,similarity:Belongs to the ubiquitin-conjugating enzyme family.,similarity:Contains 1 UBA domain.,subunit:Interacts with RNF138/NARF.,tissue specificity:Expressed in all tissues tested, including spleen, thymus, prostate, testis, ovary, small intestine, colon, peripheral blood leukocytes, T-lymphocytes, monocytes, g

Background

The protein encoded by this gene belongs to the ubiquitin-conjugating enzyme family. This protein interacts with RING finger proteins, and it can ubiquitinate huntingtin, the gene product for Huntington's disease. Known functions for this protein include a role in aggregate formation of expanded polyglutamine proteins and the suppression of apoptosis in polyglutamine diseases, a role in the dislocation of newly synthesized MHC class I heavy chains from the endoplasmic reticulum, and involvement in foam cell formation. Multiple transcript variants encoding different isoforms have been identified for this gene. [provided by RefSeq, Jul 2008],

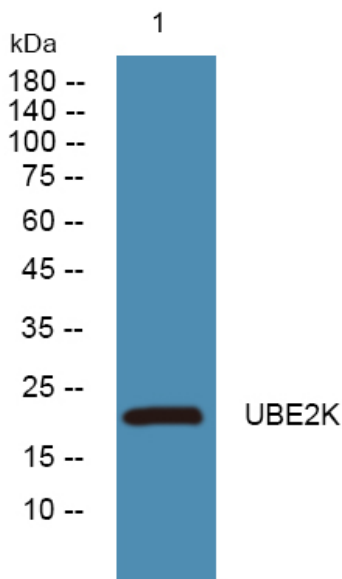
matters needing attention

Avoid repeated freezing and thawing!

Usage suggestions

This product can be used in immunological reaction related experiments. For more information, please consult technical personnel.

Products Images



Nanjing BYabscience technology Co.,Ltd