



UBE2Z Polyclonal Antibody

Catalog No	BYab-06370
Isotype	IgG
Reactivity	Human;Rat;Mouse
Applications	WB;ELISA
Gene Name	UBE2Z HOYS7
Protein Name	Ubiquitin-conjugating enzyme E2 Z (EC 6.3.2.19) (Uba6-specific E2 conjugating enzyme 1) (Use1) (Ubiquitin carrier protein Z) (Ubiquitin-protein ligase Z)
Immunogen	Synthesized peptide derived from part region of human protein
Specificity	UBE2Z Polyclonal Antibody detects endogenous levels of protein.
Formulation	Liquid in PBS containing 50% glycerol, and 0.02% sodium azide.
Source	Polyclonal, Rabbit,IgG
Purification	The antibody was affinity-purified from rabbit antiserum by affinity-chromatography using epitope-specific immunogen.
Dilution	WB 1:500-2000 ELISA 1:5000-20000
Concentration	1 mg/ml
Purity	≥90%
Storage Stability	-20°C/1 year
Synonyms	
Observed Band	38kD
Cell Pathway	Cytoplasm . Nucleus .
Tissue Specificity	Widely expressed. Highly in placenta, pancreas, spleen and testis.
Function	catalytic activity:ATP + ubiquitin + protein lysine = AMP + diphosphate + protein N-ubiquityllysine.,function:Catalyzes the covalent attachment of ubiquitin to other proteins (By similarity). Specific substrate for UBE1L2, not charged with ubiquitin by UBE1. May be involved in apoptosis regulation.,pathway:Protein modification; protein ubiquitination.,similarity:Belongs to the ubiquitin-conjugating enzyme family.,tissue specificity:Widely expressed. Highly in placenta, pancreas, spleen and testis.,
Background	This gene encodes an enzyme which ubiquitinates proteins which participate in signaling pathways and apoptosis. [provided by RefSeq, Feb 2012],

Nanjing BYabscience technology Co.,Ltd



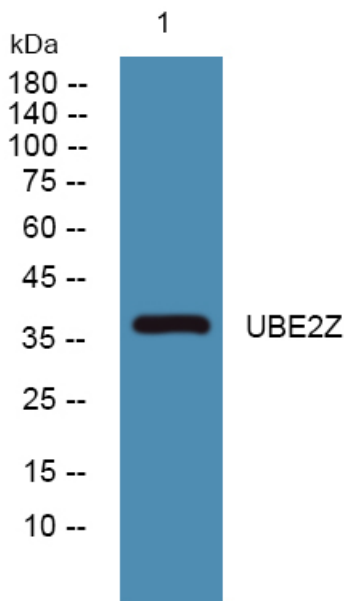
matters needing attention

Avoid repeated freezing and thawing!

Usage suggestions

This product can be used in immunological reaction related experiments. For more information, please consult technical personnel.

Products Images



Western blot analysis of lysates from KB cells, primary antibody was diluted at 1:1000, 4° over night