



# TAF7 Polyclonal Antibody

<b>Catalog No</b>	BYab-06306
<b>Isotype</b>	IgG
<b>Reactivity</b>	Human;Mouse
<b>Applications</b>	WB;ELISA
<b>Gene Name</b>	TAF7 TAF2F TAFII55
<b>Protein Name</b>	Transcription initiation factor TFIID subunit 7 (RNA polymerase II TBP-associated factor subunit F) (Transcription initiation factor TFIID 55 kDa subunit) (TAF(II)55) (TAFII-55) (TAFII55)
<b>Immunogen</b>	Synthesized peptide derived from part region of human protein
<b>Specificity</b>	TAF7 Polyclonal Antibody detects endogenous levels of protein.
<b>Formulation</b>	Liquid in PBS containing 50% glycerol, and 0.02% sodium azide.
<b>Source</b>	Polyclonal, Rabbit,IgG
<b>Purification</b>	The antibody was affinity-purified from rabbit antiserum by affinity-chromatography using epitope-specific immunogen.
<b>Dilution</b>	WB 1:500-2000 ELISA 1:5000-20000
<b>Concentration</b>	1 mg/ml
<b>Purity</b>	≥90%
<b>Storage Stability</b>	-20°C/1 year
<b>Synonyms</b>	
<b>Observed Band</b>	38kD
<b>Cell Pathway</b>	Nucleus .
<b>Tissue Specificity</b>	Ubiquitous.
<b>Function</b>	domain:The [KR]-[STA]-K motif is specifically recognized by the SETD7 methyltransferase, which methylates Lys-5 in vitro.,function:Functions as a component of the DNA-binding general transcription factor complex TFIID, a multimeric protein complex that plays a central role in mediating promoter responses to various activators and repressors. Present in both of the previously described TFIID species which either lack or contain TAFII30 (TFIID alpha and TFIID beta respectively).,similarity:Belongs to the TAF7 family.,subunit:TFIID is composed of TATA binding protein (TBP) and a number of TBP-associated factors (TAFs). Interacts with TAFII250, TAFII100, TAFII28, TAFII20, and TAFII18, but not with TAFII30 or TBP.,tissue specificity:Ubiquitous.,

Nanjing BYabscience technology Co.,Ltd



### Background

The intronless gene for this transcription coactivator is located between the protocadherin beta and gamma gene clusters on chromosome 5. The protein encoded by this gene is a component of the TFIID protein complex, a complex which binds to the TATA box in class II promoters and recruits RNA polymerase II and other factors. This particular subunit interacts with the largest TFIID subunit, as well as multiple transcription activators. The protein is required for transcription by promoters targeted by RNA polymerase II. [provided by RefSeq, Jul 2008],

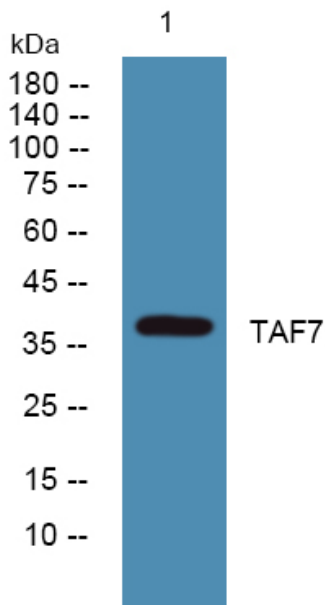
### matters needing attention

Avoid repeated freezing and thawing!

### Usage suggestions

This product can be used in immunological reaction related experiments. For more information, please consult technical personnel.

## Products Images



Nanjing BYabscience technology Co.,Ltd