



OVOL2 Polyclonal Antibody

Catalog No	BYab-06301
Isotype	IgG
Reactivity	Human;Mouse
Applications	WB;ELISA
Gene Name	OVOL2 ZNF339
Protein Name	Transcription factor Ovo-like 2 (hOvo2) (Zinc finger protein 339)
Immunogen	Synthesized peptide derived from human protein . at AA range: 90-170
Specificity	OVOL2 Polyclonal Antibody detects endogenous levels of protein.
Formulation	Liquid in PBS containing 50% glycerol, and 0.02% sodium azide.
Source	Polyclonal, Rabbit,IgG
Purification	The antibody was affinity-purified from rabbit antiserum by affinity-chromatography using epitope-specific immunogen.
Dilution	WB 1:500-2000 ELISA 1:5000-20000
Concentration	1 mg/ml
Purity	≥90%
Storage Stability	-20°C/1 year
Synonyms	
Observed Band	30kD
Cell Pathway	Nucleus .
Tissue Specificity	Expressed in testis, ovary, heart and skeletal muscle (PubMed:12213202). Expressed in the cornea, but absent from the corneal endothelium (PubMed:26749309).
Function	function:DNA-binding protein that binds to the 5'-G[GCT]GGGGG-3' core sequence. Probably acts as a transcription regulator.,similarity:Belongs to the krueppel C2H2-type zinc-finger protein family.,similarity:Contains 4 C2H2-type zinc fingers.,
Background	This gene encodes a member of the evolutionarily conserved ovo-like protein family. Mammalian members of this family contain a single zinc finger domain composed of a tetrad of C2H2 zinc fingers with variable N- and C-terminal extensions that contain intrinsically disordered domains. Members of this family are involved in epithelial development and differentiation. Knockout of this gene in mouse results in early embryonic lethality with phenotypes that include

Nanjing BYabscience technology Co.,Ltd



neurectoderm expansion, impaired vascularization, and heart anomalies. In humans, allelic variants of this gene have been associated with posterior polymorphous corneal dystrophy. [provided by RefSeq, Apr 2016],

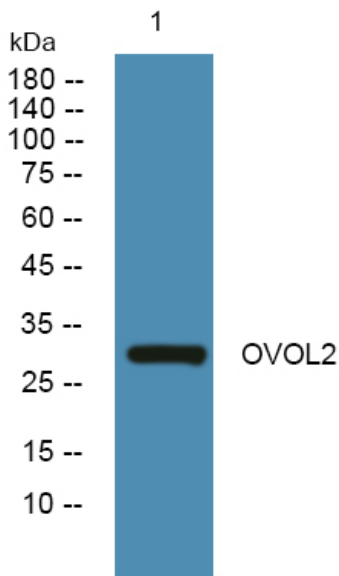
matters needing attention

Avoid repeated freezing and thawing!

Usage suggestions

This product can be used in immunological reaction related experiments. For more information, please consult technical personnel.

Products Images



Western blot analysis of lysates from K562 cells, primary antibody was diluted at 1:1000, 4° over night