



LBX1 Polyclonal Antibody

| | |
|---------------------------|---|
| Catalog No | BYab-06300 |
| Isotype | IgG |
| Reactivity | Human;Rat;Mouse |
| Applications | WB;ELISA |
| Gene Name | LBX1 LBX1H |
| Protein Name | Transcription factor LBX1 (Ladybird homeobox protein homolog 1) |
| Immunogen | Synthesized peptide derived from human protein . at AA range: 70-150 |
| Specificity | LBX1 Polyclonal Antibody detects endogenous levels of protein. |
| Formulation | Liquid in PBS containing 50% glycerol, and 0.02% sodium azide. |
| Source | Polyclonal, Rabbit,IgG |
| Purification | The antibody was affinity-purified from rabbit antiserum by affinity-chromatography using epitope-specific immunogen. |
| Dilution | WB 1:500-2000 ELISA 1:5000-20000 |
| Concentration | 1 mg/ml |
| Purity | ≥90% |
| Storage Stability | -20°C/1 year |
| Synonyms | |
| Observed Band | 30kD |
| Cell Pathway | Nucleus . |
| Tissue Specificity | Bone marrow, |
| Function | function:Transcription factor required for the development of GABAergic interneurons in the dorsal horn of the spinal cord and migration and further development of hypaxial muscle precursor cells for limb muscles, diaphragm and hypoglossal cord.,similarity:Contains 1 homeobox DNA-binding domain.,subunit:Interacts with LBXCOR1 which acts as a transcriptional corepressor., |
| Background | This gene and the orthologous mouse gene were found by their homology to the Drosophila lady bird early and late homeobox genes. In the mouse, this gene is a key regulator of muscle precursor cell migration and is required for the acquisition of dorsal identities of forelimb muscles. [provided by RefSeq, Jul 2008], |

Nanjing BYabscience technology Co.,Ltd



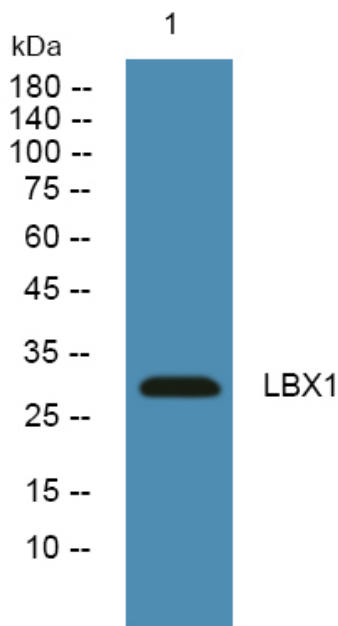
matters needing attention

Avoid repeated freezing and thawing!

Usage suggestions

This product can be used in immunological reaction related experiments. For more information, please consult technical personnel.

Products Images



Western blot analysis of lysates from K562 cells, primary antibody was diluted at 1:1000, 4° over night