



TCAL5 Polyclonal Antibody

Catalog No	BYab-06292
Isotype	IgG
Reactivity	Human;Mouse
Applications	WB;ELISA
Gene Name	TCEAL5
Protein Name	Transcription elongation factor A protein-like 5 (TCEA-like protein 5) (Transcription elongation factor S-II protein-like 5)
Immunogen	Synthesized peptide derived from part region of human protein
Specificity	TCAL5 Polyclonal Antibody detects endogenous levels of protein.
Formulation	Liquid in PBS containing 50% glycerol, and 0.02% sodium azide.
Source	Polyclonal, Rabbit,IgG
Purification	The antibody was affinity-purified from rabbit antiserum by affinity-chromatography using epitope-specific immunogen.
Dilution	WB 1:500-2000 ELISA 1:5000-20000
Concentration	1 mg/ml
Purity	≥90%
Storage Stability	-20°C/1 year
Synonyms	
Observed Band	22kD
Cell Pathway	Nucleus .
Tissue Specificity	
Function	function:May be involved in transcriptional regulation.,similarity:Belongs to the TFS-II family. TFA subfamily.,
Background	This gene, which is located on the X chromosome, encodes a protein which contains a BEX (brain expressed X-liked like family) domain. This domain is found in proteins encoded by the TCEAL elongation factor (transcription elongation factor A (SII)-like) gene family also located on the X chromosome. The coding region for this gene is located entirely in the terminal exon. [provided by RefSeq, Sep 2011],
matters needing attention	Avoid repeated freezing and thawing!

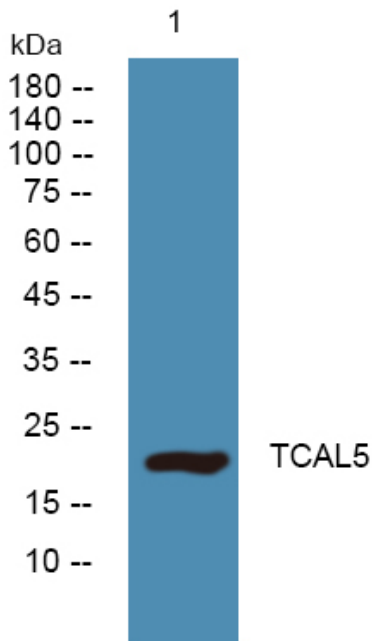
Nanjing BYabscience technology Co.,Ltd



Usage suggestions

This product can be used in immunological reaction related experiments. For more information, please consult technical personnel.

Products Images



Western blot analysis of lysates from A431 cells, primary antibody was diluted at 1:1000, 4° over night