



# TPC2L Polyclonal Antibody

<b>Catalog No</b>	BYab-06286
<b>Isotype</b>	IgG
<b>Reactivity</b>	Human;Rat;Mouse
<b>Applications</b>	WB;ELISA
<b>Gene Name</b>	TRAPPC2L HSPC126
<b>Protein Name</b>	Trafficking protein particle complex subunit 2-like protein
<b>Immunogen</b>	Synthesized peptide derived from part region of human protein
<b>Specificity</b>	TPC2L Polyclonal Antibody detects endogenous levels of protein.
<b>Formulation</b>	Liquid in PBS containing 50% glycerol, and 0.02% sodium azide.
<b>Source</b>	Polyclonal, Rabbit,IgG
<b>Purification</b>	The antibody was affinity-purified from rabbit antiserum by affinity-chromatography using epitope-specific immunogen.
<b>Dilution</b>	WB 1:500-2000 ELISA 1:5000-20000
<b>Concentration</b>	1 mg/ml
<b>Purity</b>	≥90%
<b>Storage Stability</b>	-20°C/1 year
<b>Synonyms</b>	
<b>Observed Band</b>	15kD
<b>Cell Pathway</b>	Cytoplasm, perinuclear region . Endoplasmic reticulum . Golgi apparatus .
<b>Tissue Specificity</b>	Expressed in testis, liver, bladder, lung, spleen and brain, several cell lines and primary chondrocytes cell line.
<b>Function</b>	similarity:Belongs to the TRAPP small subunits family. Sedlin subfamily.,
<b>Background</b>	This gene encodes a protein that interacts with the tethering factor trafficking protein particle (TRAPP complex). TRAPP complexes mediate the contact between vesicles and target membranes, and thus, are involved in vesicle-mediated transport of proteins and lipids. The encoded protein is related to the X-linked trafficking protein particle complex 2. A related pseudogene is located on the X chromosome. Alternative splicing results in multiple transcript variants encoding different isoforms. [provided by RefSeq, Jan 2016],

Nanjing BYabscience technology Co.,Ltd



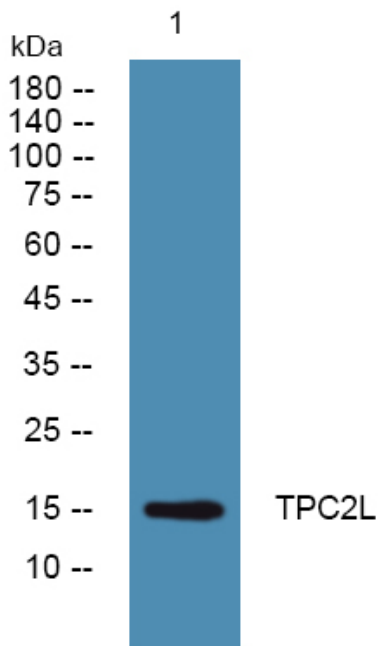
**matters needing attention**

Avoid repeated freezing and thawing!

**Usage suggestions**

This product can be used in immunological reaction related experiments. For more information, please consult technical personnel.

**Products Images**



Western blot analysis of lysates from SW480 cells, primary antibody was diluted at 1:1000, 4° over night