



# STX6 Polyclonal Antibody

<b>Catalog No</b>	BYab-06266
<b>Isotype</b>	IgG
<b>Reactivity</b>	Human;Mouse;Rat
<b>Applications</b>	WB;ELISA
<b>Gene Name</b>	STX6
<b>Protein Name</b>	Syntaxin-6
<b>Immunogen</b>	Synthesized peptide derived from part region of human protein
<b>Specificity</b>	STX6 Polyclonal Antibody detects endogenous levels of protein.
<b>Formulation</b>	Liquid in PBS containing 50% glycerol, and 0.02% sodium azide.
<b>Source</b>	Polyclonal, Rabbit,IgG
<b>Purification</b>	The antibody was affinity-purified from rabbit antiserum by affinity-chromatography using epitope-specific immunogen.
<b>Dilution</b>	WB 1:500-2000 ELISA 1:5000-20000
<b>Concentration</b>	1 mg/ml
<b>Purity</b>	≥90%
<b>Storage Stability</b>	-20°C/1 year
<b>Synonyms</b>	
<b>Observed Band</b>	28kD
<b>Cell Pathway</b>	Golgi apparatus membrane ; Single-pass type IV membrane protein .
<b>Tissue Specificity</b>	Brain,Muscle,
<b>Function</b>	function:Involved in intracellular vesicle trafficking.,PTM:Phosphorylated upon DNA damage, probably by ATM or ATR.,similarity:Belongs to the syntaxin family.,similarity:Contains 1 t-SNARE coiled-coil homology domain.,subunit:Binds EEA1. Interacts with VPS45A. Interacts with MARCH2 and MARCH3 (By similarity). Interacts with GOPC. Identified in a complex containing STX6, STX13, VAMP4 and VT11A.,
<b>Background</b>	function:Involved in intracellular vesicle trafficking.,PTM:Phosphorylated upon DNA damage, probably by ATM or ATR.,similarity:Belongs to the syntaxin family.,similarity:Contains 1 t-SNARE coiled-coil homology domain.,subunit:Binds EEA1. Interacts with VPS45A. Interacts with MARCH2 and MARCH3 (By similarity). Interacts with GOPC. Identified in a complex containing STX6, STX13,

Nanjing BYabscience technology Co.,Ltd



VAMP4 and VT11A.,

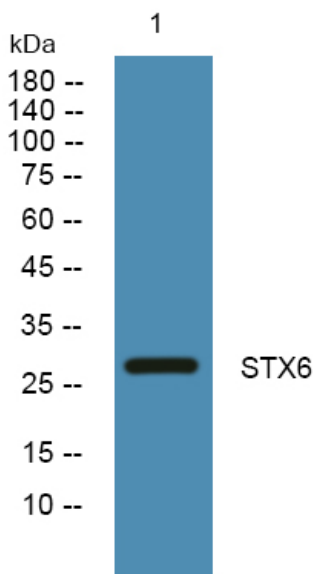
**matters needing attention**

Avoid repeated freezing and thawing!

**Usage suggestions**

This product can be used in immunological reaction related experiments. For more information, please consult technical personnel.

**Products Images**



Western blot analysis of lysates from KB cells, primary antibody was diluted at 1:1000, 4° over night

Nanjing BYabscience technology Co.,Ltd