



SYT4 Polyclonal Antibody

Catalog No	BYab-06259
Isotype	IgG
Reactivity	Human;Rat;Mouse;
Applications	WB;ELISA
Gene Name	SYT4 KIAA1342
Protein Name	Synaptotagmin-4 (Synaptotagmin IV) (SytIV)
Immunogen	Synthesized peptide derived from part region of human protein
Specificity	SYT4 Polyclonal Antibody detects endogenous levels of protein.
Formulation	Liquid in PBS containing 50% glycerol, and 0.02% sodium azide.
Source	Polyclonal, Rabbit,IgG
Purification	The antibody was affinity-purified from rabbit antiserum by affinity-chromatography using epitope-specific immunogen.
Dilution	WB 1:500-2000 ELISA 1:5000-20000
Concentration	1 mg/ml
Purity	≥90%
Storage Stability	-20°C/1 year
Synonyms	
Observed Band	46kD
Cell Pathway	Cytoplasmic vesicle, secretory vesicle, neuronal dense core vesicle membrane ; Single-pass membrane protein .
Tissue Specificity	Expressed in melanocytes (PubMed:23999003). Expressed in brain. Within brain, expression is highest in hippocampus, with substantial levels also detected in amygdala and thalamus (PubMed:23999003).
Function	cofactor: Binds 3 calcium ions per subunit. The ions are bound to the C2 domains.,function: May be involved in Ca(2+)-dependent exocytosis of secretory vesicles through Ca(2+) and phospholipid binding to the C2 domain or may serve as Ca(2+) sensors in the process of vesicular trafficking and exocytosis.,similarity: Belongs to the synaptotagmin family.,similarity: Contains 2 C2 domains.,tissue specificity: Expressed in brain. Within brain, expression is highest in hippocampus, with substantial levels also detected in amygdala and thalamus.,
Background	cofactor: Binds 3 calcium ions per subunit. The ions are bound to the C2 domains.,function: May be involved in Ca(2+)-dependent exocytosis of secretory

Nanjing BYabscience technology Co.,Ltd



vesicles through Ca(2+) and phospholipid binding to the C2 domain or may serve as Ca(2+) sensors in the process of vesicular trafficking and exocytosis.,similarity:Belongs to the synaptotagmin family.,similarity:Contains 2 C2 domains.,tissue specificity:Expressed in brain. Within brain, expression is highest in hippocampus, with substantial levels also detected in amygdala and thalamus.,

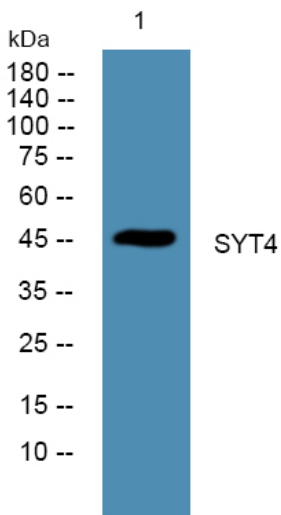
matters needing attention

Avoid repeated freezing and thawing!

Usage suggestions

This product can be used in immunological reaction related experiments. For more information, please consult technical personnel.

Products Images



Western blot analysis of lysates from DU145 cells, primary antibody was diluted at 1:1000, 4° over night