



SYT15 Polyclonal Antibody

Catalog No	BYab-06257
Isotype	IgG
Reactivity	Human;Rat;Mouse
Applications	WB;ELISA
Gene Name	SYT15
Protein Name	Synaptotagmin-15 (Chr10Syt) (Synaptotagmin XV) (SytXV)
Immunogen	Synthesized peptide derived from part region of human protein
Specificity	SYT15 Polyclonal Antibody detects endogenous levels of protein.
Formulation	Liquid in PBS containing 50% glycerol, and 0.02% sodium azide.
Source	Polyclonal, Rabbit,IgG
Purification	The antibody was affinity-purified from rabbit antiserum by affinity-chromatography using epitope-specific immunogen.
Dilution	WB 1:500-2000 ELISA 1:5000-20000
Concentration	1 mg/ml
Purity	≥90%
Storage Stability	-20°C/1 year
Synonyms	
Observed Band	46kD
Cell Pathway	[Isoform 1]: Cell membrane ; Single-pass type III membrane protein .; [Isoform 2]: Cell membrane ; Single-pass type III membrane protein .; [Isoform 4]: Cell membrane ; Single-pass type III membrane protein .
Tissue Specificity	Brain,Cerebellum,Donated clones,Heart,Thalamus,
Function	domain:Neither C2 domains mediates Ca(2+)-dependent or -independent phospholipid binding.,function:May be involved in the trafficking and exocytosis of secretory vesicles in non-neuronal tissues.,similarity:Belongs to the synaptotagmin family.,similarity:Contains 2 C2 domains.,subunit:Homodimer.,
Background	synaptotagmin 15(SYT15) Homo sapiens This gene encodes a member of the Synaptotagmin (Syt) family of membrane trafficking proteins. Members of this family contain a transmembrane region and a C-terminal-type tandem C2 domain. Unlike related family members, the encoded protein may be involved in membrane trafficking in non-neuronal tissues. Two transcript variants encoding distinct isoforms have been identified for this gene. [provided by RefSeq, Jul

Nanjing BYabscience technology Co.,Ltd



2008],

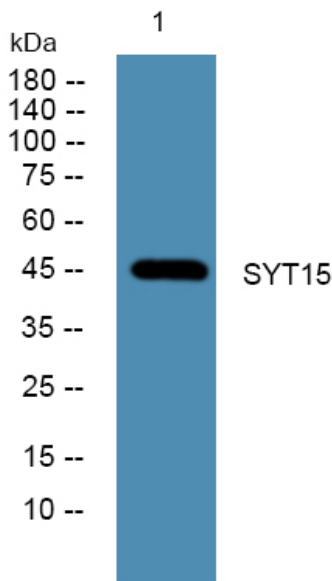
matters needing attention

Avoid repeated freezing and thawing!

Usage suggestions

This product can be used in immunological reaction related experiments. For more information, please consult technical personnel.

Products Images



Western blot analysis of lysates from SH-SY5Y cells, primary antibody was diluted at 1:1000, 4° over night