



PNISR Polyclonal Antibody

Catalog No	BYab-06235
Isotype	IgG
Reactivity	Human;Mouse
Applications	WB;ELISA
Gene Name	PNISR C6orf111 SFRS18 SRRP130 HSPC261 HSPC306
Protein Name	Arginine/serine-rich protein PNISR (PNN-interacting serine/arginine-rich protein) (SR-related protein) (SR-rich protein) (Serine/arginine-rich-splicing regulatory protein 130) (SRp130) (Splicing fact
Immunogen	Synthesized peptide derived from part region of human protein
Specificity	PNISR Polyclonal Antibody detects endogenous levels of protein.
Formulation	Liquid in PBS containing 50% glycerol, and 0.02% sodium azide.
Source	Polyclonal, Rabbit,IgG
Purification	The antibody was affinity-purified from rabbit antiserum by affinity-chromatography using epitope-specific immunogen.
Dilution	WB 1:500-2000 ELISA 1:5000-20000
Concentration	1 mg/ml
Purity	≥90%
Storage Stability	-20°C/1 year
Synonyms	
Observed Band	88kD
Cell Pathway	Nucleus speckle .
Tissue Specificity	Expressed in heart, skeletal muscle, thymus, spleen, kidney, liver, placenta and leukocytes.
Function	PTM:Phosphorylated upon DNA damage, probably by ATM or ATR.,sequence caution:Contaminating sequence. Potential poly-A sequence.,similarity:Belongs to the splicing factor SR family.,subunit:Interacts with PNN.,tissue specificity:Expressed in heart, skeletal muscle, thymus, spleen, kidney, liver, placenta and leukocytes.,
Background	PTM:Phosphorylated upon DNA damage, probably by ATM or ATR.,sequence caution:Contaminating sequence. Potential poly-A sequence.,similarity:Belongs to the splicing factor SR family.,subunit:Interacts with PNN.,tissue specificity:Expressed in heart, skeletal muscle, thymus, spleen, kidney, liver, placenta and leukocytes.,

Nanjing BYabscience technology Co.,Ltd



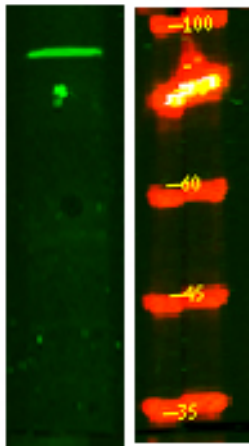
matters needing attention

Avoid repeated freezing and thawing!

Usage suggestions

This product can be used in immunological reaction related experiments. For more information, please consult technical personnel.

Products Images



Western Blot analysis of HeLa lysis, using primary antibody at 1:1000 dilution. Secondary antibody(catalog#:RS23920) was diluted at 1:10000