



SPTN4 Polyclonal Antibody

Catalog No	BYab-06227
Isotype	IgG
Reactivity	Human;Rat;Mouse;
Applications	IHC;IF
Gene Name	SPTBN4 KIAA1642 SPTBN3
Protein Name	Spectrin beta chain, non-erythrocytic 4 (Beta-IV spectrin) (Spectrin, non-erythroid beta chain 3)
Immunogen	Synthesized peptide derived from part region of human protein
Specificity	SPTN4 Polyclonal Antibody detects endogenous levels of protein.
Formulation	Liquid in PBS containing 50% glycerol, and 0.02% sodium azide.
Source	Polyclonal, Rabbit,IgG
Purification	The antibody was affinity-purified from rabbit antiserum by affinity-chromatography using epitope-specific immunogen.
Dilution	IHC-p 1:50-300. IF 1:50-200
Concentration	1 mg/ml
Purity	≥90%
Storage Stability	-20°C/1 year
Synonyms	
Observed Band	282kD
Cell Pathway	Cytoplasm, cytoskeleton . Cytoplasm, cell cortex .
Tissue Specificity	Expressed in skeletal muscle at the sarcolemma and in the muscle capillaries (at protein level) (PubMed:28540413). Abundantly expressed in brain and pancreatic islets (PubMed:11086001).
Function	similarity:Belongs to the spectrin family.,similarity:Contains 1 PH domain.,similarity:Contains 18 spectrin repeats.,similarity:Contains 2 CH (calponin-homology) domains.,tissue specificity:Abundantly expressed in brain and pancreatic islets.,
Background	Spectrin is an actin crosslinking and molecular scaffold protein that links the plasma membrane to the actin cytoskeleton, and functions in the determination of cell shape, arrangement of transmembrane proteins, and organization of organelles. It is composed of two antiparallel dimers of alpha- and beta- subunits. This gene is one member of a family of beta-spectrin genes. The encoded protein localizes to the nuclear matrix, PML nuclear bodies, and cytoplasmic vesicles. A

Nanjing BYabscience technology Co.,Ltd



highly similar gene in the mouse is required for localization of specific membrane proteins in polarized regions of neurons. Multiple transcript variants encoding different isoforms have been found for this gene. [provided by RefSeq, Jul 2008],

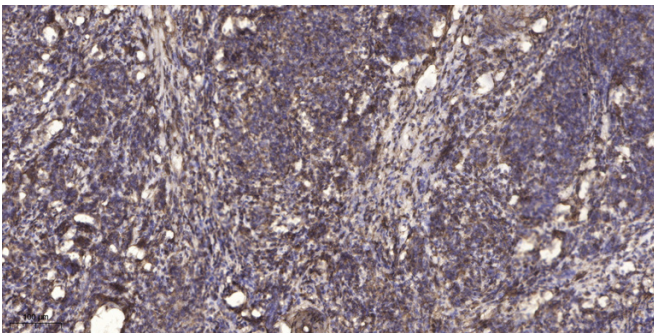
matters needing attention

Avoid repeated freezing and thawing!

Usage suggestions

This product can be used in immunological reaction related experiments. For more information, please consult technical personnel.

Products Images



Immunohistochemical analysis of paraffin-embedded human cervical carcinoma. 1, Antibody was diluted at 1:200(4° overnight). 2, Tris-EDTA,pH9.0 was used for antigen retrieval. 3,Secondary antibody was diluted at 1:200(room temperature, 45min).