



SSA27 Polyclonal Antibody

Catalog No	BYab-06185
Isotype	IgG
Reactivity	Human;Mouse
Applications	WB;ELISA
Gene Name	SSSCA1
Protein Name	Sjogren syndrome/scleroderma autoantigen 1 (Autoantigen p27)
Immunogen	Synthesized peptide derived from part region of human protein
Specificity	SSA27 Polyclonal Antibody detects endogenous levels of protein.
Formulation	Liquid in PBS containing 50% glycerol, and 0.02% sodium azide.
Source	Polyclonal, Rabbit,IgG
Purification	The antibody was affinity-purified from rabbit antiserum by affinity-chromatography using epitope-specific immunogen.
Dilution	WB 1:500-2000 ELISA 1:5000-20000
Concentration	1 mg/ml
Purity	≥90%
Storage Stability	-20°C/1 year
Synonyms	
Observed Band	21kD
Cell Pathway	
Tissue Specificity	Ovary,
Function	function: Might play a role in mitosis. Antigenic molecule. Could be a centromere-associated protein. May induce anti-centromere antibodies.,PTM: Phosphorylated upon DNA damage, probably by ATM or ATR.,
Background	This antigen is recognized by a subset of anti-centromere antibodies from patients with scleroderma and/or Sjogren's syndrome. Subcellular localization has not yet been established. [provided by RefSeq, Jul 2008],
matters needing attention	Avoid repeated freezing and thawing!

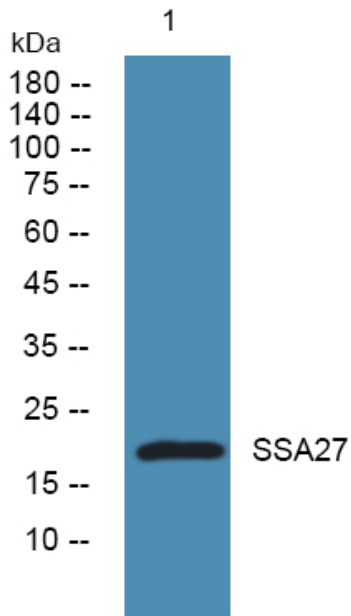
Nanjing BYabscience technology Co.,Ltd



Usage suggestions

This product can be used in immunological reaction related experiments. For more information, please consult technical personnel.

Products Images



Western blot analysis of lysates from U2OS cells, primary antibody was diluted at 1:1000, 4° over night