



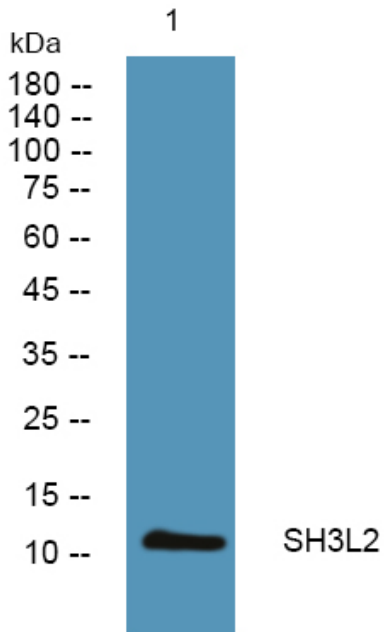
SH3L2 Polyclonal Antibody

Catalog No	BYab-06171
Isotype	IgG
Reactivity	Human;Mouse
Applications	WB;ELISA
Gene Name	SH3BGRL2 FASH3
Protein Name	SH3 domain-binding glutamic acid-rich-like protein 2 (Fovea-associated SH3 domain-binding protein)
Immunogen	Synthesized peptide derived from part region of human protein AA range: 1-50
Specificity	SH3L2 Polyclonal Antibody detects endogenous levels of protein.
Formulation	Liquid in PBS containing 50% glycerol, and 0.02% sodium azide.
Source	Polyclonal, Rabbit,IgG
Purification	The antibody was affinity-purified from rabbit antiserum by affinity-chromatography using epitope-specific immunogen.
Dilution	WB 1:500-2000 ELISA 1:5000-20000
Concentration	1 mg/ml
Purity	≥90%
Storage Stability	-20°C/1 year
Synonyms	
Observed Band	11kD
Cell Pathway	Nucleus .
Tissue Specificity	Highly expressed in brain, placenta, liver and kidney. Expressed in retina.
Function	similarity:Belongs to the SH3BGR family.,tissue specificity:Highly expressed in brain, placenta, liver and kidney. Expressed in retina.,
Background	similarity:Belongs to the SH3BGR family.,tissue specificity:Highly expressed in brain, placenta, liver and kidney. Expressed in retina.,
matters needing attention	Avoid repeated freezing and thawing!
Usage suggestions	This product can be used in immunological reaction related experiments. For more information, please consult technical personnel.

Nanjing BYabscience technology Co.,Ltd



Products Images



Western blot analysis of lysates from U2OS cells,
primary antibody was diluted at 1:1000, 4° over night